

**kobold**

VR7



# User manual

EN • 27095-03 • 0423

# Contents

<b>1</b>	<b>Before you start .....</b>	<b>4</b>			
<b>2</b>	<b>Product overview .....</b>	<b>5</b>			
2.1	Kobold VR7 robot vacuum cleaner .....	5	8.2	Manual charging on a charging station..... 30	
2.2	Charging options .....	7	8.3	Automatic charging..... 31	
2.2.1	Kobold CB7 solo charging station .....	7	8.4	Returning the robot vacuum cleaner to the charging station 31	
2.2.2	Kobold RB7 emptying & charging station.....	7	<b>9</b>	<b>General cleaning pattern of the robot vacuum cleaner .....</b>	<b>32</b>
<b>3</b>	<b>Intended use.....</b>	<b>8</b>	<b>10</b>	<b>Operation .....</b>	<b>33</b>
<b>4</b>	<b>For your safety .....</b>	<b>9</b>	10.1	Putting into operation.....	33
4.1	Hazards and safety instructions.....	10	10.1.1	Installing the MyKobold app and pairing your robot vacuum cleaner .....	33
4.2	Classification of safety warning messages.....	19	10.1.2	Switching on for the first time	33
4.3	Obligations of the user .....	20	10.1.3	Switching on with a low battery.....	34
<b>5</b>	<b>Getting started .....</b>	<b>21</b>	10.2	Selecting a cleaning mode.....	34
5.1	Preparing your household .....	21	10.2.1	MAX mode .....	34
5.2	Assembly.....	22	10.2.2	AUTO mode.....	34
<b>6</b>	<b>Getting the charging station ready for use.....</b>	<b>23</b>	10.2.3	ECO mode .....	35
6.1	Removing the protective film .	23	10.2.4	Pausing .....	35
6.2	Choosing a setup location .....	23	10.2.5	Cancelling cleaning .....	36
6.3	Connecting the mains cable ...	24	10.3	Standby mode .....	36
<b>7</b>	<b>Function overview .....</b>	<b>26</b>	10.4	Switching the robot vacuum cleaner off and on again.....	36
7.1	Operator panel overview .....	26	10.5	Cleaning area and navigation of the robot vacuum cleaner ..	38
7.2	LED displays.....	27	10.5.1	Climbing over objects .....	38
7.2.1	Overview of LED displays .....	27	<b>11</b>	<b>Wi-Fi and app control using smart devices* .....</b>	<b>39</b>
7.2.2	Status of the robot vacuum cleaner .....	28	11.1	Technical requirements.....	39
7.3	Voice response.....	28	11.2	Establishing a Wi-Fi Connection .....	40
<b>8</b>	<b>Charging the robot vacuum cleaner .....</b>	<b>29</b>	11.3	Removing the robot vacuum cleaner from your home network.....	40
8.1	Battery status .....	29			

11.4	Controlling the robot vacuum cleaner with Amazon Alexa or Google Assistant .....	40	14.3.3	Cleaning the emptying & charging station.....	53
<b>12</b>	<b>Pairing the emptying &amp; charging station with the dual battery charger .....</b>	<b>41</b>	14.3.4	Removing, cleaning and inserting the motor protection filter .....	54
<b>13</b>	<b>Transportation .....</b>	<b>42</b>	14.3.5	Removing and replacing the fragrance chip.....	55
<b>14</b>	<b>Maintenance .....</b>	<b>43</b>	<b>15</b>	<b>Software update.....</b>	<b>56</b>
14.1	Spare parts and consumables .....	43	<b>16</b>	<b>Troubleshooting.....</b>	<b>57</b>
14.2	Maintenance of your robot vacuum cleaner .....	43	16.1	Faults.....	57
14.2.1	Regular cleaning of the robot vacuum cleaner .....	43	16.2	Emptying & charging station ..	60
14.2.2	Emptying the dust container manually .....	44	<b>17</b>	<b>Disposal and environmental protection.....</b>	<b>62</b>
14.2.3	Cleaning the rear suction channel .....	44	17.1	Disposal of the device .....	62
14.2.4	Cleaning the filter .....	45	17.2	Disposal of batteries.....	62
14.2.5	Replacing the filter .....	45	17.3	Disposal of premium filter bags and robot vacuum cleaner filters .....	62
14.2.6	Removing and replacing fragrance chips .....	46	17.4	Disposal of the packaging.....	62
14.2.7	Removing, cleaning and inserting the motor protection filter .....	46	<b>18</b>	<b>Warranty .....</b>	<b>63</b>
14.2.8	Reinstalling the dust container and filter.....	48	<b>19</b>	<b>Service .....</b>	<b>63</b>
14.2.9	Cleaning the side brush.....	48	<b>20</b>	<b>Technical Data .....</b>	<b>64</b>
14.2.10	Cleaning the roller brush .....	49	20.1	Robot vacuum cleaner .....	64
14.2.11	Cleaning the sensors .....	50	20.2	Solo charging station .....	65
14.2.12	Removing or changing the battery.....	50	20.3	Emptying & charging station ..	65
14.3	Maintenance of the emptying & charging station .....	51	20.4	Manufacturer and Importer ....	66
14.3.1	Opening and closing the filter cover.....	51	<b>21</b>	<b>Declaration of Conformity.....</b>	<b>66</b>
14.3.2	Inserting and changing the premium filter bag.....	52			

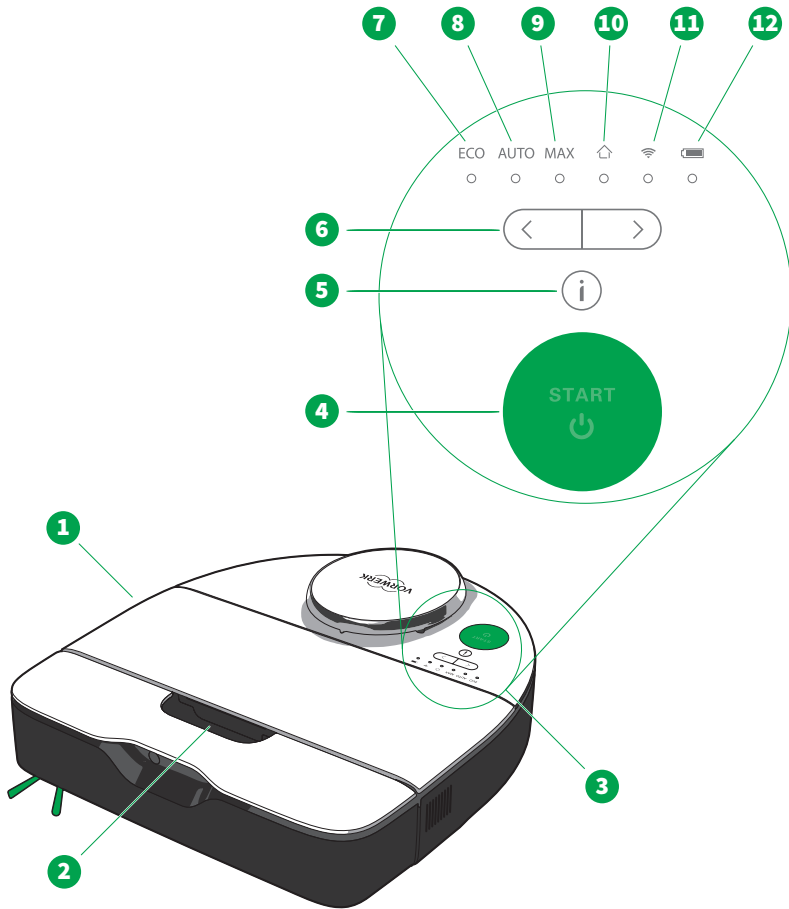
# 1 Before you start

Congratulations on the purchase of your new Kobold device.

1. Read the instruction manual carefully before using the device and accessories for the first time.
2. Follow the detailed instructions for use in the following chapters.

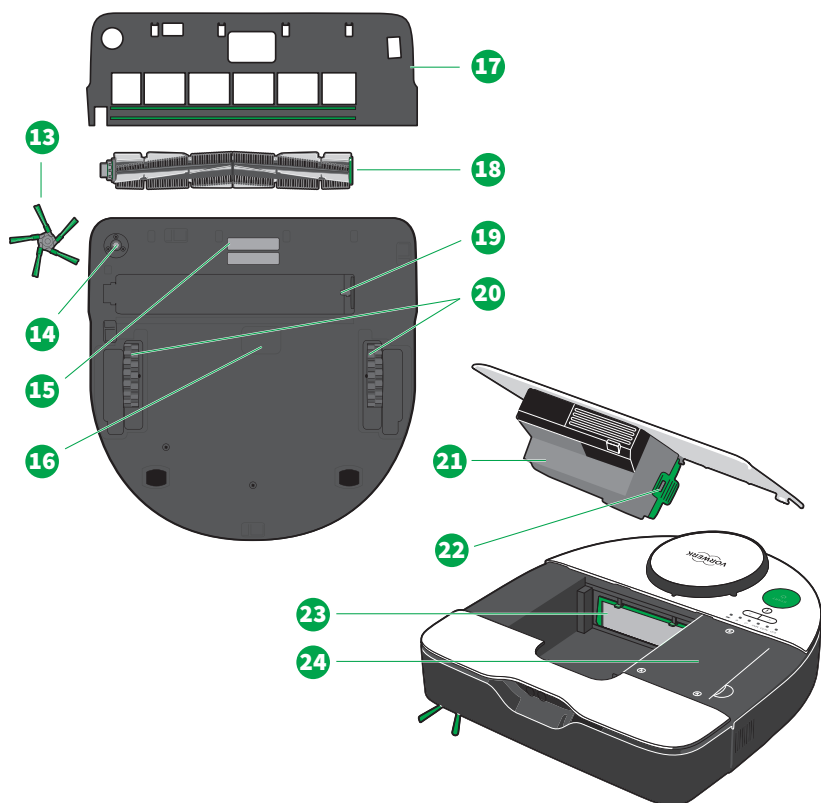
## 2 Product overview

### 2.1 Kobold VR7 robot vacuum cleaner



#### Overview of the Kobold VR7 robot vacuum cleaner and operating controls

1 Kobold VR7 robot vacuum cleaner	7 ECO LED
2 Recessed carry grip	8 AUTO LED
3 Operator panel with START button, selection keys and LED displays	9 MAX LED
4 START button (switching on and off)	10 HOME LED
5 Information button	11 Wi-Fi LED
6 Selection keys, left and right	12 Battery LED




---

### Overview of the Kobold VR7 robot vacuum cleaner and components

---

13 Side brush	19 Roller brush holder
14 Side brush holder	20 Wheels
15 Charging contacts	21 Cover with dust container including filter
16 Suction opening	22 Filter on the robot vacuum cleaner
17 Brush cover	23 Motor protection filter
18 Roller brush	24 Battery compartment

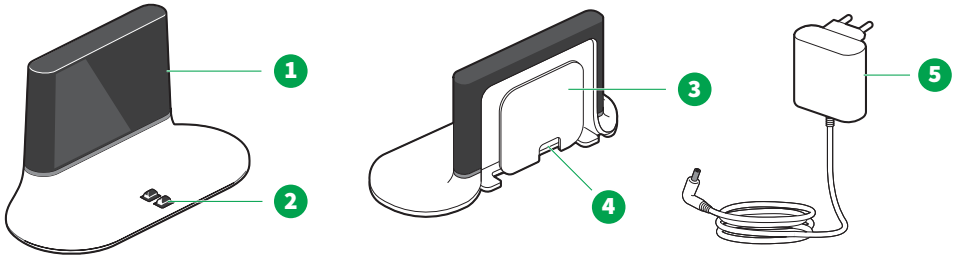
---

Type and range of accessories included may vary. Accessories can be purchased separately. The diagrams in this instruction manual are meant to illustrate the functions of the device and its accessories. The illustrations shown may differ from the actual product with respect to detail and proportions. Drawings of plugs are for illustrative purposes only. The actual product may vary depending on the country.

---

## 2.2 Charging options

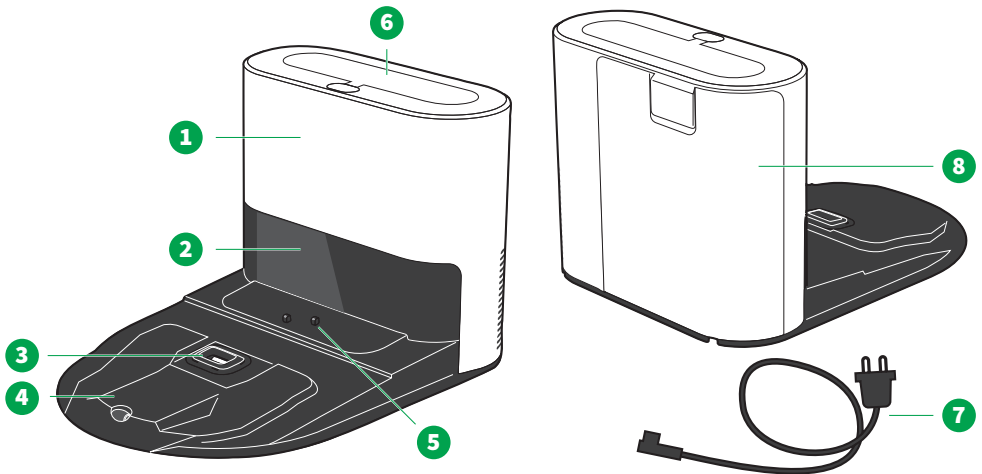
### 2.2.1 Kobold CB7 solo charging station



#### Overview of the Kobold CB7 solo charging station

1	Infrared window	4	Cable outlet
2	Charging contacts for the robot vacuum cleaner	5	Mains plug
3	Cable holder		

### 2.2.2 Kobold RB7 emptying & charging station



#### Overview of the Kobold RB7 emptying & charging station

1	Main unit including filter bag	5	Charging contacts for the robot vacuum cleaner
2	Infrared window	6	Connection for charging system (consisting of Kobold PC7 dual battery charger and Kobold ST7 mount for RB7 station)
3	Suction opening	7	Mains cable
4	Access ramp	8	Filter cover

### 3 Intended use

Retain this document for future reference. It is an important part of the device and must be kept with it if you pass it on to someone else.

Use the device and accessories only for their intended purpose in order to prevent risks to you and other people and to prevent damage to the device or to other property and equipment.

The device is not intended to be used by children under 8 years of age. Cleaning and user maintenance should not be carried out by children under 8 years of age. This device is not intended to be used by persons (including children aged 8 years and above) with reduced physical, sensory or mental capabilities or lack of experience and knowledge unless they are supervised by a person responsible for their safety, or have been given instruction from this person concerning the safe use of the device and understand the hazards involved.

Children must not be allowed to play with the device or the chargers (including the cable and plug).

Cleaning and user maintenance must not be carried out by children aged 8 years and above without supervision.

This appliance may only be used for its intended purpose. No other use is permitted. The manufacturer bears no responsibility for damages resulting from improper use. If the appliance is subject to technical modifications, the warranty and liability for material defects shall be rendered invalid. The manufacturer's obligation to compensate on the basis of product liability and/or the dealer's obligation to compensate for material defects shall no longer apply if technical modifications are made to the product.

When working with the device, please observe all the accompanying documentation as well as the device display. The manufacturer accepts no liability for damages resulting from improper use.

The device complies with the safety regulations of the country in which it has been sold by an authorised Vorwerk organisation. If the device is used in another country, compliance with the local safety standards cannot be guaranteed. Vorwerk therefore assumes no liability for any resulting safety risks for the user.

#### **Kobold VR7 robot vacuum cleaner**

The Kobold VR7 robot vacuum cleaner is solely intended for removing dirt and dust within domestic areas and is only suitable for indoor use. The Kobold VR7 robot vacuum cleaner may only be used with the corresponding Kobold accessories. The Kobold VR7 robot vacuum cleaner must not be stored or operated outdoors and must be protected from moisture.

- Kobold CB7 solo charging station** The Kobold CB7 solo charging station is solely intended for charging the Kobold VR7 robot vacuum cleaner in domestic environments and is only suitable for indoor use. The Kobold CB7 solo charging station must not be stored or operated outdoors and must be protected from moisture.
- Kobold RB7 emptying & charging station** The Kobold RB7 emptying & charging station is solely intended for charging the Kobold VR7 robot vacuum cleaner and for automatically extracting dust from the device and is only suitable for indoor use. The Kobold RB7 emptying & charging station must not be stored or operated outdoors and must be protected from moisture. Used in combination with the Kobold PC7 dual battery charger and Kobold ST7 mount for the RB7 station, it can also charge the Kobold VK7 cordless handheld vacuum cleaner. The Kobold RB7 emptying & charging station may only be used with the corresponding Kobold accessories.

## 4 For your safety

Safety is an essential part of every Vorwerk product. However, the safety of this product can only be ensured if the product is used correctly and the safety warnings are observed.

### About your Robot Vacuum Cleaner

The Kobold VR7 robot vacuum cleaner is an autonomous, self-navigating device. Taking into account the specific layout of your living space, the robot will clean your home independently and reliably, even when you are not there.

## 4.1 Hazards and safety instructions



### WARNING

#### **Risk of fire or electric shock!**

**If incorrect repairs are performed on the device or corresponding charger/charging unit, this may cause a fire or electric shock.**

- Never attempt to repair the device yourself.
- Repairs to electrical appliances may only be carried out by a Vorwerk customer service centre, a workshop authorised by Vorwerk or a person with similar qualifications in order to avoid hazards.
- Defective parts may only be replaced by original replacement parts in order to avoid hazards.
- In the event of damage to your device, contact Vorwerk customer service.
- Only operate the charger/charging unit on a connection that has been properly installed by a qualified electrician.
- Do not attempt to open the charger and repair it yourself. The charger has live parts inside and is not a serviceable component.

#### **Risk of electric shock!**

**The power cord may be damaged by tensile stress.**

- Never pull the mains plug from the socket by the power cord, only by the plug.
- Never carry the chargers by the connection cable.

- Risk of electric shock!** If water gets into the electrical components, you could get an electric shock.
- Never clean the mains plug on the charging station with water, liquid cleaners or a wet cleaning cloth.
  - The emptying & charging station is connected to the power supply. Therefore, only clean the filter compartment and the sealing surfaces around the filter bag and around the robot vacuum cleaner with a slightly damp (not soaking wet!) cloth, if necessary.
  - Never clean the remaining areas of the emptying & charging station, including the power cord, with water, liquid cleaners or a wet cleaning cloth.
  - Do not use the charger or charging unit in damp environments.
  - Never immerse the charger or charging unit in water or other liquids.
  - Never pour water over the charger or charging unit.
  - Do not hold the charger or charging unit under running water.
  - Do not touch the charger or charging unit with wet hands.

- Risk of fire or electric shock!** If the device runs over power cords, exposed cables or hanging wires, it could damage them. Touching a damaged cable could cause an electric shock.
- Make sure that the power cord does not come into contact with the rotating brushes, wheels or rollers on the device.

- Risk of fire or electric shock!** Damage to the emptying & charging station or connection cables could cause an electric shock or fire.
- If the mains power cord on the emptying & charging station is damaged, it must be replaced by a compatible original Vorwerk mains power cord.
  - Do not continue using the emptying & charging station and power cord if they are damaged.
  - Ensure that you do not damage, bend or twist the mains cable.
  - Do not put heavy objects on the mains cable.

- Risk of electric shock!** Carrying out cleaning when the charger is still plugged in could cause an electric shock.
- Disconnect the charger and/or connection cable for the charger from the power socket before cleaning.

<b>Risk of electric shock!</b>	<p><b>Improper use of the device could cause an electric shock.</b></p> <ul style="list-style-type: none"> <li>• Do not insert any sharp objects into the electrical contacts.</li> <li>• Do not modify the electrical contacts.</li> <li>• Always switch off the charging units and disconnect the mains plug before carrying out any retrofitting, cleaning or maintenance work on them.</li> </ul>
<b>Explosion hazard!</b>	<p><b>The improper handling of the battery or the device could cause an explosion.</b></p> <ul style="list-style-type: none"> <li>• Only use original Vorwerk batteries that are compatible with your device.</li> <li>• Never attempt to open, repair or modify the battery. Defective batteries must be replaced by new original Vorwerk batteries.</li> <li>• Stop using the battery if it is damaged.</li> </ul>
<b>Risk of fire or explosion!</b>	<p><b>If burning or readily ignitable substances should enter the interior of the device, this may cause fire or an explosion.</b></p> <ul style="list-style-type: none"> <li>• Do not vacuum hot ash or burning cigarette ends.</li> <li>• Do not vacuum explosive or readily inflammable substances.</li> </ul>
<b>Risk of fire or explosion!</b>	<p><b>The device could start to burn if it is exposed to heat, if the power supply unit is covered, or as a result of improper use.</b></p> <ul style="list-style-type: none"> <li>• The device and all its accessories (especially the battery) must never be placed on an open fire or exposed to an external heat source.</li> <li>• Stop using the device and all its accessories (especially the battery) if they have been dropped on the floor and show visible signs of damage or appear to be faulty.</li> <li>• Do not short-circuit the battery under any circumstances, e.g. as a result of metal objects coming into contact with the battery terminals.</li> <li>• Make sure that the power supply unit is not covered.</li> </ul>
<b>Risk of fire or explosion!</b>	<p><b>Charging non-rechargeable batteries can cause a fire or explosion!</b></p> <ul style="list-style-type: none"> <li>• Only use the original Vorwerk battery that is compatible with your device.</li> </ul>
<b>Fire hazard!</b>	<p><b>The use of an incompatible charger can damage the battery and cause a fire.</b></p> <ul style="list-style-type: none"> <li>• Only use the device with original Kobold accessories.</li> <li>• To charge the battery/device, only use the removable power unit (charger/charging unit) that was supplied with the device.</li> </ul>

**Fire hazard!****Safety hazards within a workspace can cause a fire.**

- Never use the device in rooms where there are burning candles or lamps on moveable pieces of furniture or on the floor.
- Secure exposed and hanging cables on electrical appliances (e.g. table lamps). These could be pulled down by the connecting cables, causing damage or a fire.
- Do not let the device drive over recessed floor lamps. Stopping over a lamp could damage the device and, in the worst case, cause a fire.
- Do not use the device in danger areas, e.g. near open fireplaces.

**Fire hazard!****If water gets inside the battery, it could cause a fire.**

- Never clean the battery with water, liquid cleaners or a wet cleaning cloth.
- Keep the battery away from water and other liquids.

**Fire hazard!****The charging contacts can be short-circuited.**

- Never place objects onto the charging contacts on the chargers.

**Fire hazard!****If the device or battery are accidentally triggered or activated when in transit, this could cause a build-up of heat, which could lead to a fire.**

- Follow the instructions in the manual to ensure safe transportation.

**Risk of choking!****Small parts may be accidentally swallowed and cause choking.**

- Keep small parts such as fragrance chips out of the reach of children.

**Risk of serious injury!****If the floor sensors are covered or dirty, the device may fall down stairs or landings.**

- Remove easily moveable rugs or runners as well as lightweight, loose objects. Such objects may be pushed along in front of the robot vacuum cleaner, thereby obstructing its floor sensors.
- Clean the floor sensors regularly (ideally every time the dust container is emptied).

**CAUTION****Risk of burns!****If water enters the charging plug, it could heat up.**

- Never clean the charging plug with water, liquid cleaners or a wet cleaning cloth.

**Risk of injury!**

**The device or the charging unit could injure children or pets if they sit or stand on them.**

- Keep children and pets away from the robot vacuum cleaner, and do not let them sit or stand on the robot vacuum cleaner or charging unit.

**Risk of injury from moving parts!**

**You could injure yourself on moving parts.**

- Stay clear of moving parts.
- Never reach into the moving parts.
- Finish the cleaning cycle and lay the device upside down on a solid, level surface before you start to carry out maintenance on the brushes.

**Risk of injury due to sharp fragments of plastic!**

**Broken plastic can have sharp edges and you could injure yourself.**

- Do not use the device if plastic components have been damaged due to being knocked or dropped.
- Protect yourself from fragments with sharp edges.

**Risk of injury due to negative pressure!**

**Vacuuming of skin or hair can cause injury.**

- Ensure that the area in which the robot is working is prepared in such a way that no hair or parts of the body can come into contact with the robot's suction and the robot does not operate near children or pets.

**Risk of contact with dangerous substances!**

**Leaked electrolyte from batteries and rechargeable batteries can cause injuries.**

- Do not touch leaked electrolyte or electrolyte residues from leaking batteries or rechargeable batteries without skin or eye protection.
- Leaking electrolyte must not come into contact with skin, eyes or mucous membranes.
- In case of accidental contact, immediately wash your hands and flush the eyes or mucous membranes with plenty of clean water.
- Keep away from leaking electrolyte vapours and ensure that there is good ventilation.
- If irritation persists or the electrolyte has come into contact with the eyes or mucous membranes, seek medical advice.
- Clothing and textiles that have come into contact with leaked electrolyte or electrolyte residues must be thoroughly washed immediately or disposed of.
- Leaked electrolyte, electrolyte residues as well as leaking batteries and rechargeable batteries are flammable. Keep them away from fire and heat.

**Risk of injury!**

**Various sensors contain approved invisible lasers. Please observe the following guidelines to prevent localised injuries from the laser.**

- Switch off the device prior to all retrofitting work.
- Modifications to the device or attempts to repair the device, especially the sensors, are prohibited.
- Do not continuously look into the gap between the operator panel and top round cover or into the sensors while the device is running.

**Loss of suitability for allergy sufferers and risk of damage from improper use!**

**Unsuitable or damaged filter material will not retain fine, allergenic particles.**

- Only use the original Kobold products that are intended to be used with this device.
- Do not reuse spent Kobold premium filter bags.
- Only use the device with an original Kobold premium filter bag installed.



## NOTICE

<b>Risk of damage from improper use!</b>	<b>Improper use of the charger could damage the device.</b> <ul style="list-style-type: none"><li>• To charge the device, only use the original charger and/or charging unit and mains cable from Vorwerk that are designed to be used with this product.</li><li>• Only operate the charger and/or charging unit with the alternating current voltage and mains frequency stated on the type plate.</li></ul>
<b>Risk of damage from improper use!</b>	<b>Improper use of the device may damage it.</b> <ul style="list-style-type: none"><li>• Do not block the air outlets during use under any circumstances. Keep the device free of contaminants that reduce airflow.</li></ul>
<b>Risk of damage to the floor!</b>	<b>The improper use of the device could cause damage to the floor.</b> <ul style="list-style-type: none"><li>• Please refer to the cleaning and care information issued by the floor manufacturer.</li></ul>
<b>Risk of damage to other objects!</b>	<b>When in operation, the device could damage other objects that are situated in the area being cleaned.</b> <ul style="list-style-type: none"><li>• Remove lightweight, breakable and moveable objects (e.g. vases, curtains and similar) from the work area. These could be dragged along by the robot vacuum cleaner and, depending on the nature of the object, cause damage to the device, the floor or the object itself.</li><li>• Secure curtains, tablecloths and cords in the work area.</li></ul>
<b>Risk of damage from improper use!</b>	<b>Certain vacuumed materials can clog the pores on the filter.</b> <ul style="list-style-type: none"><li>• Do not vacuum up Kobosan active or other powdered cleaning agents with the device.</li><li>• Do not vacuum up very fine sand, chalk, cement dust or similar.</li></ul>
<b>Risk of damage from improper use!</b>	<b>If you use the robot vacuum cleaner without a filter, it could damage the motor and shorten the service life of the device.</b> <ul style="list-style-type: none"><li>• Never use the device without a filter.</li></ul>
<b>Risk of damage as a result of battery discharge!</b>	<b>Deep discharging of the battery could cause permanent damage.</b> <ul style="list-style-type: none"><li>• Fully charge the device at least once a year in order to prevent deep discharge, which can damage the battery.</li></ul>

<b>Risk of damage from improper use!</b>	<p><b>If the sensors are covered, the device may not be able to function, communicate or navigate correctly.</b></p> <ul style="list-style-type: none"> <li>• Take care to avoid scratching the infrared window of the charging station and do not cover it with stickers or other objects.</li> <li>• Do not cover the sensors on the device.</li> </ul>
<b>Risk of damage from improper use!</b>	<p><b>Using the device on unsuitable surfaces can cause damage.</b></p> <ul style="list-style-type: none"> <li>• The device has limited suitability for cleaning very deep pile carpets or delicate carpets (especially flat-weave carpets that have no pile or those where fibres would be combed out if cleaned with a rotating brush). Only use the device to vacuum carpets with a pile height of up to 15mm and carpets that are approved for cleaning with an active brush.</li> <li>• Section off deep-pile carpets, if necessary, using the virtual no-go zones in the MyKobold app.</li> <li>• If you still want to use the robot vacuum cleaner to clean a delicate carpet or a carpet with a pile height greater than 15mm, test it first in an inconspicuous area.</li> <li>• The device is not approved for cleaning worktops or ceramic hobs.</li> </ul>
<b>Risk of damage from improper use!</b>	<p><b>The app control makes it possible to use the device without it being in sight. If your home is not sufficiently prepared, any objects that are lying around could get damaged or cause damage.</b></p> <ul style="list-style-type: none"> <li>• Make sure that the area in which the robot vacuum cleaner is operating is prepared accordingly.</li> </ul>
<b>Risk of damage from improper use!</b>	<p><b>If the device is not in perfect working order, it could cause damage.</b></p> <ul style="list-style-type: none"> <li>• Only use the original Vorwerk products that are intended to be used with this device.</li> <li>• Do not operate the device if the device itself or the power cord are damaged or if the device is not fully assembled.</li> </ul>
<b>Risk of damage to the battery!</b>	<p><b>Extreme heat or cold shortens the service life and/or can cause damage to the batteries.</b></p> <ul style="list-style-type: none"> <li>• Do not expose the device to fire, heat, direct sunlight or excessive temperatures.</li> <li>• Do not place the device near a heat source (oven, heater or hot radiator).</li> <li>• Always comply with the ambient temperatures specified in the technical data for storage and operation.</li> </ul>

<b>Risk of damage due to incorrect cleaning!</b>	<p><b>The device could get damaged if not cleaned correctly.</b></p> <ul style="list-style-type: none"> <li>• Never clean the device or charging station with water, liquid cleaners or a wet cleaning cloth.</li> <li>• Never wet-clean the roller brush. Use a dry or slightly damp cloth if necessary. The roller brush is not dishwasher safe or waterproof.</li> <li>• Do not use abrasive cleaning pads, scouring agents or aggressive liquids such as benzene or acetone to clean the device.</li> <li>• Do not use disinfectant to clean the device.</li> </ul>
<b>Risk of damage from improper use!</b>	<p><b>The device can get damaged if you use it outdoors or in damp areas.</b></p> <ul style="list-style-type: none"> <li>• Do not use the robot vacuum cleaner in areas where it could be exposed to wet conditions or moisture, such as near showers or swimming pools.</li> <li>• Do not use the device outdoors.</li> </ul>
<b>Risk of damage from improper use!</b>	<p><b>Damp in the filter compartment of the emptying &amp; charging station or in the dust container of the robot can damage the device.</b></p> <ul style="list-style-type: none"> <li>• If the filter compartment becomes damp, dry it before using it again.</li> <li>• Replace the robot's filter and/or the premium filter bag.</li> </ul>
<b>Risk of damage from improper use!</b>	<p><b>If the device or emptying &amp; charging station are not in perfect working order, they could cause damage.</b></p> <ul style="list-style-type: none"> <li>• Only use the robot vacuum cleaner and emptying &amp; charging station with the Kobold motor protection filter installed.</li> </ul>
<b>Risk of damage from improper use!</b>	<p><b>A motor protection filter that has not dried properly can cause damage.</b></p> <ul style="list-style-type: none"> <li>• If the motor protection filter is damp, let it dry out in a warm place for 24 hours before putting it back into the device.</li> </ul>

## Risk of damage to the device!

Moisture inside the device can damage it.

- Do not vacuum liquids or damp dirt.
- Do not vacuum damp doormats or carpets.
- Do not use the device in damp environments (in wet bathrooms or outdoor areas, etc.) or in places where there is a risk that the device could come into contact with liquids.
- Never pour water over the device or hold it under running water. Never immerse the device in water or other liquids.
- Do not store the device outdoors.
- Keep the device protected from moisture.

## 4.2 Classification of safety warning messages

The safety warning messages in this manual are highlighted by safety symbols and signal words. The symbol and signal word indicate the severity of the potential hazard.

### Classification of safety warning messages

The safety warning messages that precede each action are shown as follows:

## WARNING



### Type and source of hazard

Explanation of type and source of hazard/consequences

- Measures to prevent hazard

## Meaning of signal words

WARNING	Risk of death or serious injury if hazard is not avoided.
CAUTION	Risk of minor injury if hazard is not avoided.
NOTE	Material damage if hazard is not avoided.

## Meaning of safety symbols

	Safety warning message indicating the severity of the potential hazard		Reference to damage to property or equipment		Laser
	Indoor use only		Read manual before charging		Do not use if the mains plug is damaged or the pins are bent!



Device of protection  
class II



Removable power  
supply unit



Functional earth

## 4.3 Obligations of the user

To ensure that your device and the Vorwerk accessories operate correctly, please follow the guidelines below:

1. Follow the instructions in the manual and all accompanying documentation.
2. Keep the manual in a place where it can be easily accessed, should you need to refer to it.
3. Ensure that any damage to the device is repaired without delay by the manufacturer.

## 5 Getting started

In this chapter, you will learn how to set up your robot vacuum cleaner for use. You will learn about the basic functions of your robot vacuum cleaner and how to handle the device.

### 5.1 Preparing your household

Your robot vacuum cleaner has a number of safety functions. Nevertheless, you should observe the following before using your robot vacuum cleaner:

#### WARNING



##### **Risk of fire or electric shock!**

If the device runs over power cords, exposed cables or hanging wires, it could damage them. Touching a damaged cable could cause an electric shock.

- Make sure that the power cord does not come into contact with the rotating brushes, wheels or rollers on the device.

#### WARNING



##### **Risk of serious injury!**

If the floor sensors are covered or dirty, the device may fall down stairs or landings.

- Remove easily moveable rugs or runners as well as lightweight, loose objects. Such objects may be pushed along in front of the robot vacuum cleaner, thereby obstructing its floor sensors.
- Clean the floor sensors regularly (ideally every time the dust container is emptied).

## NOTICE



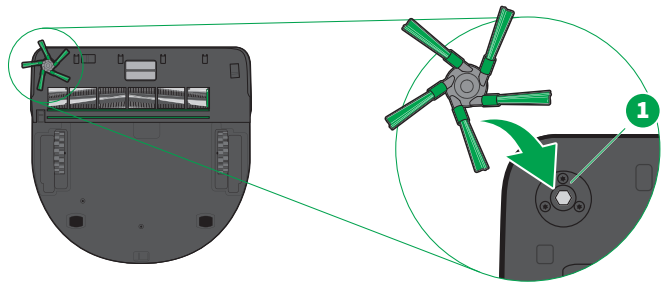
### Risk of damage from improper use!

Using the device on unsuitable surfaces can cause damage.

- The device has limited suitability for cleaning very deep pile carpets or delicate carpets (especially flat-weave carpets that have no pile or those where fibres would be combed out if cleaned with a rotating brush). Only use the device to vacuum carpets with a pile height of up to 15mm and carpets that are approved for cleaning with an active brush.
- Section off deep-pile carpets, if necessary, using the virtual no-go zones in the MyKobold app.
- If you still want to use the robot vacuum cleaner to clean a delicate carpet or a carpet with a pile height greater than 15mm, test it first in an inconspicuous area.
- The device is not approved for cleaning worktops or ceramic hobs.

**Note** The robot vacuum cleaner is not fully charged on delivery. **You must therefore fully charge the robot vacuum cleaner before using it for the first time** [▶ 29].

## 5.2 Assembly



1. Remove the transparent protective films from the robot vacuum cleaner.
2. Attach the side brush by pressing it into position on the mounting point (1).

## 6 Getting the charging station ready for use

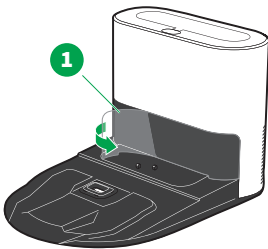
The robot vacuum cleaner can be operated with two different charging stations:

- with the **Kobold CB7 solo charging station** [▶ 7]

or

- with the **Kobold RB7 emptying & charging station** [▶ 7]

### 6.1 Removing the protective film



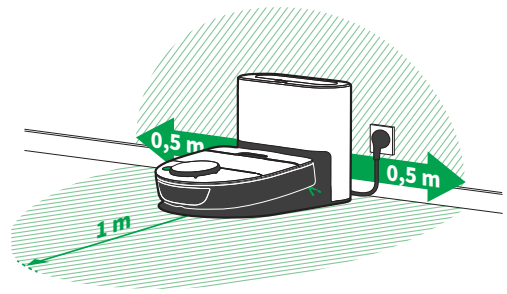
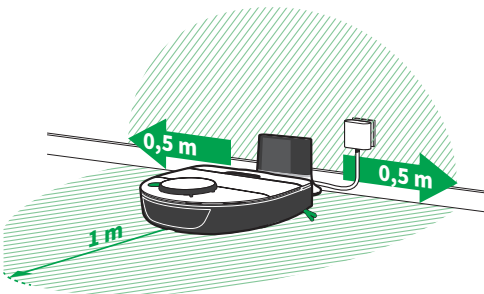
- Before first use, remove the protective film (1) from the infrared window on the charging station (the emptying & charging station is shown here).

### 6.2 Choosing a setup location

High ambient temperatures can have an effect on the cooling time of lithium-ion batteries. Do not position the charging station in a place that is exposed to direct sunlight, as this can increase the charging time and shorten the battery life.

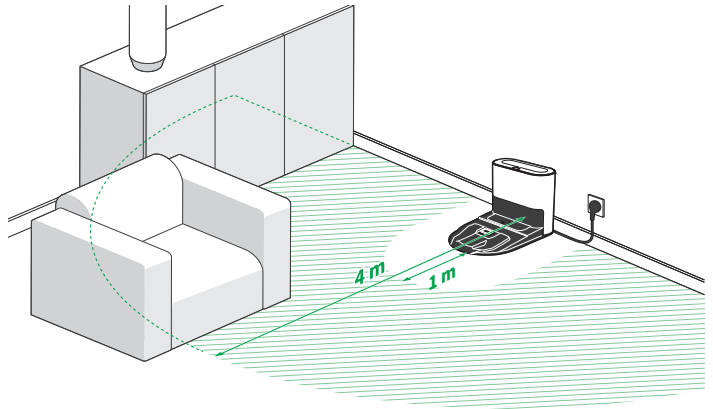
Option A Kobold CB7 solo charging station

Option B Kobold RB7 emptying & charging station



1. Place the charging station on a level surface so that the charging contacts and infrared window are freely accessible for the robot vacuum cleaner.
2. Put the charging station in a place where there is relatively little activity and where furniture is not often moved.

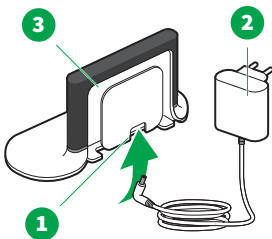
3. Make sure that there is a strong Wi-Fi signal from your router to the charging station in case you want to control your robot using the app.



4. Provide your robot vacuum cleaner with sufficiently large reference points, such as furniture, in the 4-metre radius in front of the charging station.
5. Make sure that there are no obstacles within 0.5 metres on either side of the robot vacuum cleaner.
6. Ensure that there is a level, freely accessible area approx. 1 metre in front of the robot vacuum cleaner.
7. Do not set up the charging station underneath furniture, on stairs or landings, in direct sunlight or in front of black, dark or highly reflective walls.
8. Connect the mains plug to the socket.

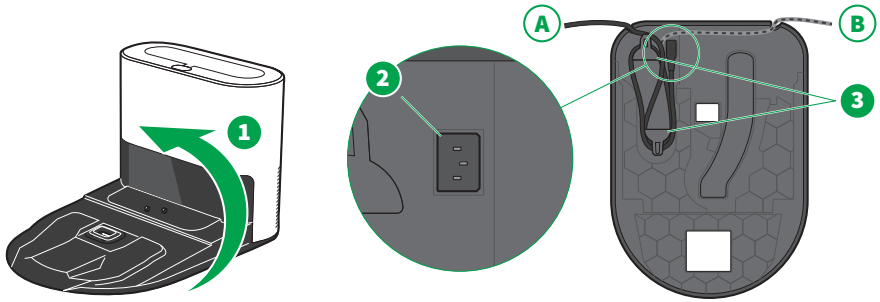
## 6.3 Connecting the mains cable

### Kobold CB7 solo charging station



1. Plug the mains cable into the designated charging socket (1) on the charging station and ensure that it is fully inserted.
2. Connect the mains plug (2) to a socket.
3. Wind any excess cable around the cable holder (3).

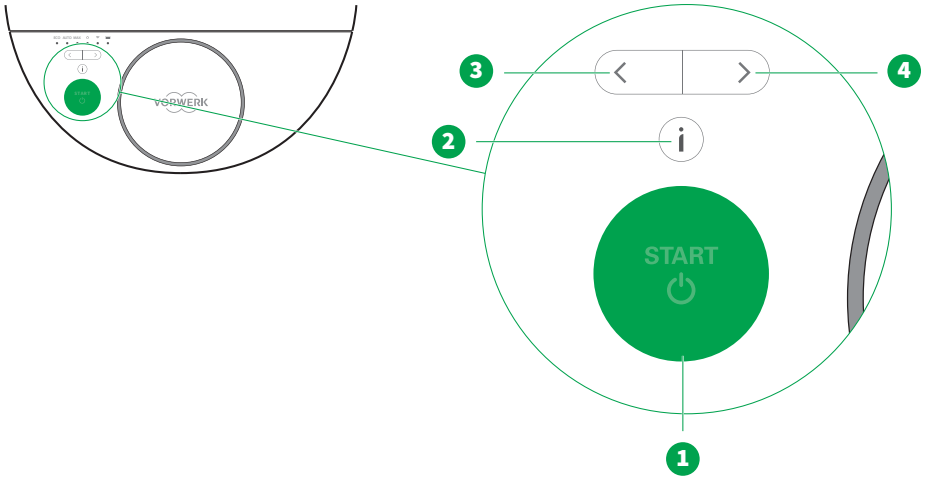
## Kobold RB7 emptying & charging station



1. Turn the emptying & charging station over (1).  
The connector for the power supply (2) is located on the underside of the emptying & charging station.
2. Insert the plug into the connector for the power supply (2).
3. Wind any excess cable around the holder (3) on the emptying & charging station.
4. Guide the cable out through one of the two slots on the base (A or B).
5. Put the emptying & charging station back into the correct position.
6. Connect the mains plug to a socket.

# 7 Function overview

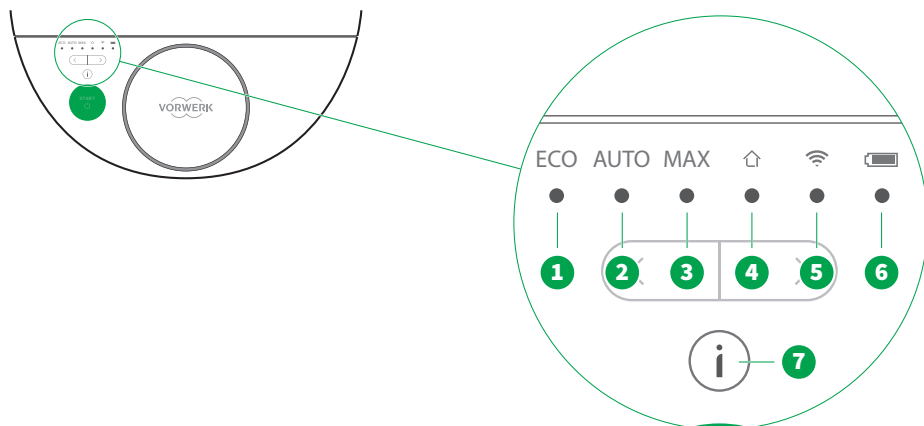
## 7.1 Operator panel overview



No.	Name	Meaning
(1)	START button	Starts, stops or pauses the cleaning process.
(2)	Information button	The information button lights up and indicates the type of message (information, warning or error) that will play next. When you press the information button, this message will be played.
(3)	Selection key, left	For selecting MAX, AUTO or ECO as well as the Wi-Fi or Home function.
(4)	Selection key, right	You always start on the cleaning mode that is currently selected.

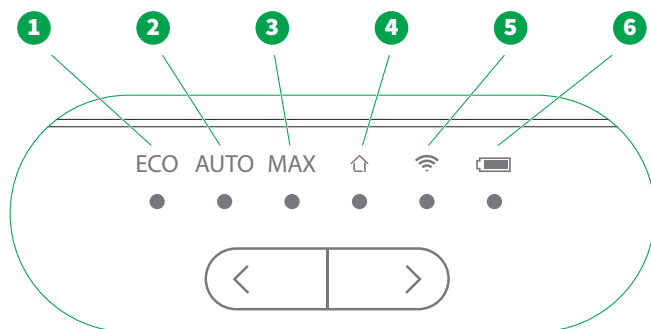
## 7.2 LED displays

### 7.2.1 Overview of LED displays



No.	Name	Meaning
(1)	<i>ECO</i> LED	The robot vacuum cleaner operates in ECO mode with reduced motor output (fan and brush performance), see <a href="#">ECO mode [▶ 35]</a> . It is quieter, uses less energy and is suitable for light to moderate dirt. The <i>ECO</i> LED lights up when this mode is selected.
(2)	<i>AUTO</i> LED	The AUTO cleaning mode adjusts the fan and brush performance to the type of floor (carpet or hard floor), see <a href="#">AUTO mode [▶ 34]</a> . The <i>AUTO</i> LED lights up when this mode is selected.
(3)	<i>MAX</i> LED	The MAX cleaning mode offers maximum cleaning performance (maximum fan and brush performance). As the standard cleaning mode, it is suitable for most cleaning requirements and offers the best results on carpets and hard floors, see <a href="#">MAX mode [▶ 34]</a> . The <i>MAX</i> LED lights up when this mode is selected.
(4)	<i>Home</i> LED	Indicates whether the robot vacuum cleaner can locate the charging station. If it can, it will return to the charging station.
(5)	<i>Wi-Fi</i> LED	Indicates whether there is a connection to your home network.
(6)	<i>Battery</i> LED	Indicates the charge level of the robot vacuum cleaner. The battery charge level is indicated by different colours, see <a href="#">Battery status [▶ 29]</a> .
(7)	Information button LED	The information button gives you information on the current status of the robot vacuum cleaner and the emptying & charging station. The colours of the information button LED have the following meaning: Green: information Yellow: warning Red: error

## 7.2.2 Status of the robot vacuum cleaner



LED display	Status
LEDs (1-6) light up one after the other	The robot vacuum cleaner is correctly positioned on the charging station. The illumination of the LEDs occurs once.
All LEDs (1-6) off	The robot vacuum cleaner is switched off.
All LEDs (1-6) come on in succession	The robot vacuum cleaner is powering up.
All LEDs (1-6) light up green three times	The robot vacuum cleaner is ready for use.
Home LED (4) lights up green	Location of the charging station is known.
Home LED (4) lights up yellow	Location of the charging station is unknown. The robot vacuum cleaner cannot locate the charging station.
Home LED (4) pulsates green	The robot vacuum cleaner is returning to the charging station (home).
Battery LED (6)	For detailed information on the battery, see <a href="#">Battery status [▶ 29]</a> .

For further information, see [Operation \[▶ 33\]](#).

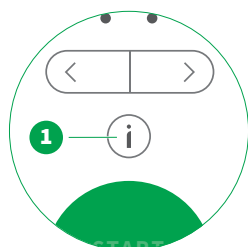
## 7.3 Voice response

The information button LED lights up to indicate that there is a message (information, warning, error). When you press the information button, you will hear this message.

You can set the robot's voice response to different languages.

- Hold down the information button (1) and select the preferred language by pressing the selection keys left or right.
- ⇒ *The voice function on the robot will tell you the language that is currently selected each time you press the selection key.*

German is set as the default language.



## 8 Charging the robot vacuum cleaner

The robot vacuum cleaner is not fully charged on delivery.

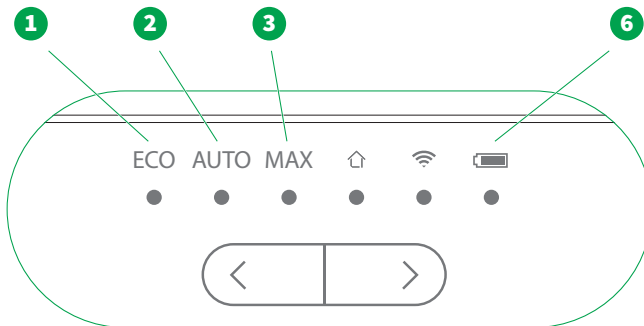
- Fully charge the robot vacuum cleaner before using it for the first time [▶ 30].

When charging the device for the first time, it can take up to 10 seconds for the charging process to start.

As soon as the *Battery* LED is solid green, the robot vacuum cleaner is ready for operation. It can take 3.5 to 4 hours to fully charge an empty battery. When the robot vacuum cleaner returns after cleaning, charging takes approximately 2 to 3 hours.

Install the MyKobold app while your robot vacuum cleaner is charging for the first time. You can set up the Wi-Fi connection while charging is in progress [▶ 39].

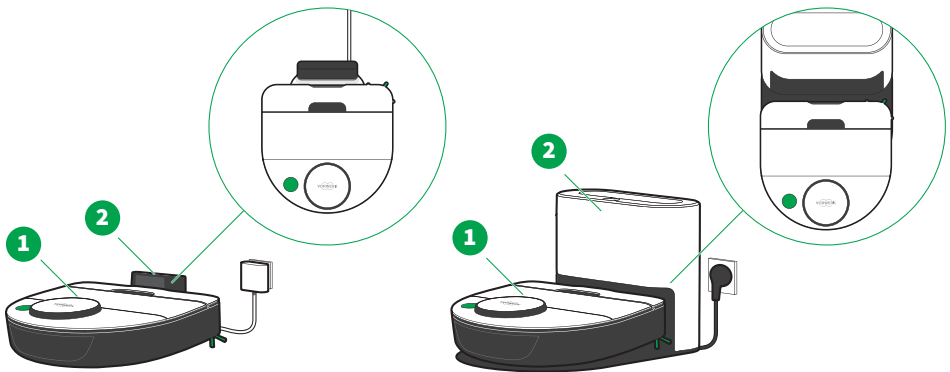
### 8.1 Battery status



<i>Battery</i> LED (6)	Status
Off	Robot vacuum cleaner is switched off or the battery is empty
Pulsates red first, then green until charging is complete	Robot vacuum cleaner is charging during a cleaning cycle, <i>ECO</i> (1), <i>AUTO</i> (2) and <i>MAX</i> (3) LEDs: selected mode has a solid green light
Pulsates green until charging is complete	Robot vacuum cleaner is charging and is ready for use, all other LEDs are off
Pulsates green until charging is complete (50% dimmer)	Robot vacuum cleaner is charging and is on standby, all other LEDs are off
Solid green light	Fully charged and ready for use

Battery LED (6)	Status
Solid green light (50% dimmer) All other LEDs are off	Fully charged and standby
Pulsates red, robot vacuum cleaner is in motion	Battery charge < 25% (only ready once battery has been charged)
Solid green light, robot vacuum cleaner is in motion	Battery charge > 25%
Flashes red	Critical error, please contact <a href="#">customer service</a> [ <a href="#">▶ 63</a> ]

## 8.2 Manual charging on a charging station



To charge your robot vacuum cleaner before using it for the first time or when the battery is completely empty, please proceed as follows:

1. Ensure that the charging station (2) is connected to the power supply [[▶ 24](#)].
2. Place the robot vacuum cleaner (1) on the charging station (2).
3. Ensure that the charging contacts on the underside of the robot vacuum cleaner are touching the charging contacts on the charging station.  
There is a small gap between the robot vacuum cleaner and the infrared window on the charging station (see image).
4. Wait a few seconds for the initialisation to complete.
  - ⇒ *The ECO, AUTO, MAX, Home, Wi-Fi and Battery LEDs will light up in succession and you will hear a beep.*
  - ⇒ *During the charging process, the Battery LED will pulsate until charging is complete. When the battery is fully charged, the Battery LED will be permanently lit.*
5. You must also press the START button for at least 3 seconds if the device is switched off.

The full performance efficiency of the batteries is only reached after about 2-3 full charging cycles.

### 8.3 Automatic charging

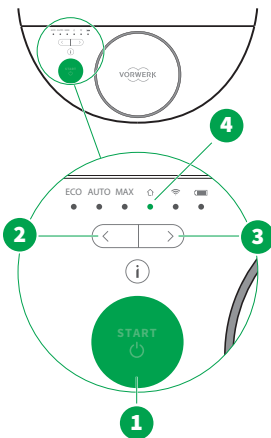
Once cleaning is complete or when the battery charge drops to too low a level, the robot vacuum cleaner automatically returns to the charging station to recharge. As soon as the robot vacuum cleaner is connected to the charging station, the *ECO*, *AUTO*, *MAX*, *Home*, *Wi-Fi* and *Battery* LEDs light up in succession.

**Note** Before the charging process can start, the emptying & charging station extracts any dust and dirt from the robot vacuum cleaner. This takes approx. 25 seconds. The charging process can only start once this has been completed. You can customise the suction on the robot vacuum cleaner in the MyKobold app.

The robot vacuum cleaner only returns to the charging station automatically if it can locate it, e.g. if it started cleaning from the charging station. If you move the robot vacuum cleaner manually during cleaning, it may not be able to find its way back to the charging station.

The robot can only be restarted when the battery charge level is at least 25 %.

### 8.4 Returning the robot vacuum cleaner to the charging station



You can send the robot vacuum cleaner back to the charging station. To do this, the robot vacuum cleaner must be able to locate the charging station. If the robot vacuum cleaner recognises where the charging station is located, the *Home* LED (4) will be lit green. If the robot vacuum cleaner does not know where the charging station is, the *Home* LED (4) will be lit yellow.

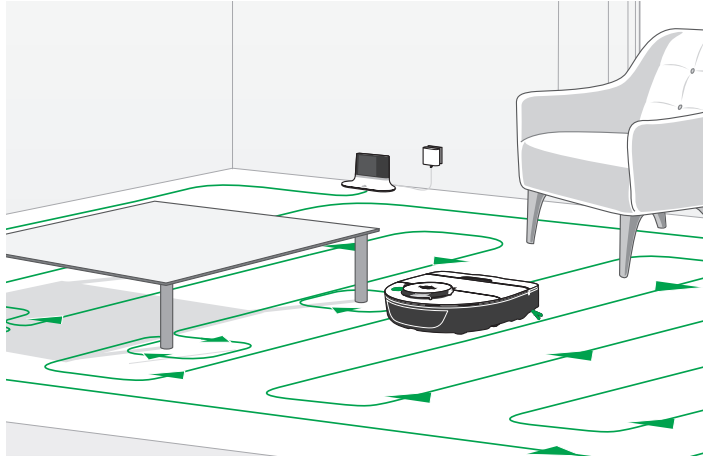
If the *Home* LED is lit green, you can return the robot vacuum cleaner to the charging station as follows:

1. If the robot vacuum cleaner is in the process of cleaning, pause the cleaning cycle by pressing the **START** button (1).
2. Then press the left (2) or right (3) selection key so that the *Home* LED (4) flashes white.
3. Press the **START** button to confirm your selection.  
⇒ *The robot vacuum cleaner returns to the charging station. As it does so, the Home LED pulsates green.*

## 9 General cleaning pattern of the robot vacuum cleaner

The robot vacuum cleaner works in straight, parallel lines to ensure that your floors are cleaned as effectively as possible. It divides larger rooms into areas of approx. 4 x 4 m.

It starts by moving along the outer edge of each area before cleaning the inner section. It continues in this way, one section at a time. When the robot vacuum cleaner has finished cleaning, it returns to the charging station.



Depending on the layout (furniture, doors, etc.), the robot will divide rooms into various sub-areas. It may be that the robot vacuum cleaner initially leaves out a sub-area and returns to it later. The entire floor area will however be cleaned. This can be optimised by moving the charging station.

# 10 Operation

## 10.1 Putting into operation

### 10.1.1 Installing the MyKobold app and pairing your robot vacuum cleaner



The MyKobold app offers many useful features that allow you to customise the way you use your robot vacuum cleaner. Using the app, you can find information on the device, create schedules and cleaning areas and obtain helpful tips for troubleshooting.

1. Download the MyKobold app from the Apple App Store or Google Play Store and install it on your smartphone or tablet. You can find the app under the name *MyKobold*.

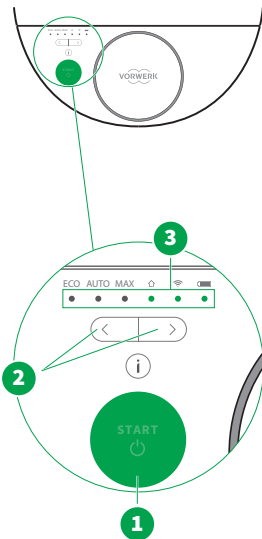


2. Launch the app, select *Add Robot* and follow the instructions in the app.  
You can add multiple robot vacuum cleaners in the app.

### 10.1.2 Switching on for the first time

When you switch on your robot vacuum cleaner for the first time, it must be docked on the charging station.

- If the robot vacuum cleaner does not automatically start charging during the first start-up, or if the robot vacuum cleaner was completely powered down beforehand, press the START button (1) for several seconds.  
⇒ *The robot vacuum cleaner is activated. The LEDs (3) switch on in succession until all 6 LEDs light up green simultaneously three times.*



### 10.1.3 Switching on with a low battery

#### Robot vacuum cleaner is at the charging station

If the robot vacuum cleaner is at the charging station and has less than 25% battery charge, it cannot start the cleaning cycle.

- Press the START button.  
⇒ *If the battery charge is below 25%, the voice response will tell you that cleaning will start as soon as the battery is fully charged.*

#### Robot vacuum cleaner is in a room

If the robot vacuum cleaner is in a room and not at the charging station and has less than 25% battery charge, it cannot start cleaning.

1. Press the START button.  
⇒ *If the battery charge is below 25%, the voice response will tell you that the robot's battery charge is low and that you should place the robot on the charging station for recharging.*
2. Place the robot vacuum cleaner on the charging station.

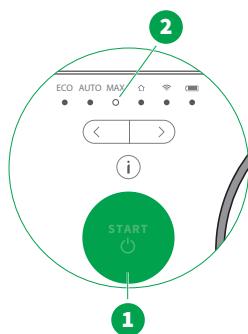
## 10.2 Selecting a cleaning mode

The cleaning mode can be selected. The robot vacuum cleaner will stay in the cleaning mode that was last selected even if it is set to standby.

### 10.2.1 MAX mode

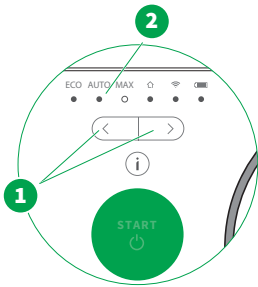
The MAX cleaning mode (2) is the default setting and is activated by pressing the START button (1). As the default mode, it is suitable for most cleaning requirements and offers the best results on carpets and hard floors.

- Start the cleaning process by pressing the START button (1).



### 10.2.2 AUTO mode

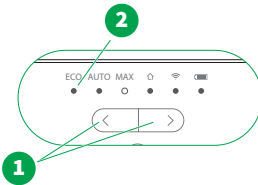
The AUTO cleaning mode automatically adjusts the fan and brush performance to the type of floor (carpet or hard floor). The *AUTO* LED lights up when this mode is selected.



1. Press one of the selection keys (1) to select AUTO mode.  
 ⇒ *The AUTO LED (2) pulsates white. This means that AUTO mode has been selected. After 3 seconds, the AUTO LED (2) becomes a solid green light to indicate that the selected mode is confirmed.*
2. Now press the START button to run the robot vacuum cleaner in AUTO mode.  
 ⇒ *The robot vacuum cleaner will now adjust its settings to the flooring.*

### 10.2.3 ECO mode

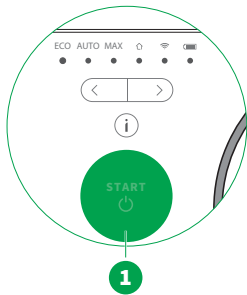
In ECO mode, the robot vacuum cleaner works with reduced motor performance. It is quieter, uses less energy and is suitable for light to moderate dirt. In ECO mode, the battery capacity of the robot vacuum cleaner is sufficient for up to 120 minutes.



1. Press one of the selection keys (1) to select ECO mode.  
 ⇒ *The ECO LED (2) pulsates white. This means that ECO mode has been selected. After 3 seconds, the ECO LED (2) becomes a solid green light to indicate that the selected mode is confirmed.*
2. Now press the START button to run the robot vacuum cleaner in ECO mode.

### 10.2.4 Pausing

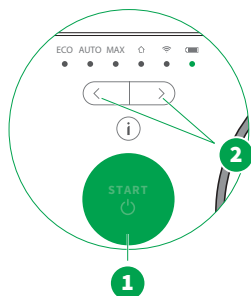
If you want to interrupt the cleaning process for a short time, proceed as follows:



1. Press the START button (1) on the robot vacuum cleaner.  
 ⇒ *The LED for the mode that is currently selected flashes.*
2. Press the START button (1) again to resume the cleaning cycle.

### 10.2.5 Cancelling cleaning

1. Press the START button (1) twice.  
⇒ *Cleaning is stopped.*
2. Carry the robot vacuum cleaner back to the charging station.



### 10.3 Standby mode

The robot vacuum cleaner automatically switches to standby mode if it is not used for approximately 2 minutes. The *Battery* LED (5) lights up to indicate the current battery status and is up to 50% dimmer. All other LEDs are off.

#### Starting the robot vacuum cleaner from standby mode

- Press the START button (1).  
⇒ *The robot vacuum cleaner will set off and start cleaning.*

#### Waking up the robot vacuum cleaner

- Press one of the selection keys (3), (4).  
⇒ *The robot vacuum cleaner will wake up. The LED display will come on. With sufficient battery charge, the robot vacuum cleaner will be ready to use again.*

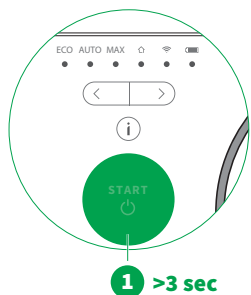
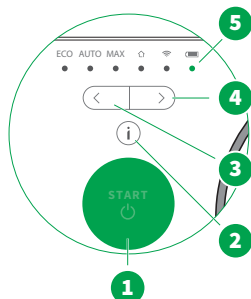
### 10.4 Switching the robot vacuum cleaner off and on again

#### Switching off

If you do not want to use the robot vacuum cleaner for an extended period (e.g. while on holiday), you can switch it off completely.

- Press the START button (1) for approx. 3 seconds until all the LEDs have gone out.  
⇒ *The robot vacuum cleaner is now switched off.*

When switched off, the robot vacuum retains all its settings for a couple of weeks, until it has lost all its charge.



## Switching on again

- Press the START button (1) for approx. 3 seconds.  
⇒ *The robot vacuum cleaner is now switched on.*

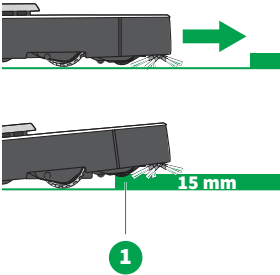
## 10.5 Cleaning area and navigation of the robot vacuum cleaner

The robot vacuum cleaner climbs over low objects within the area to be cleaned. It recognises obstacles and navigates around them with little or no contact.

### 10.5.1 Climbing over objects

Despite its low height, the robot vacuum cleaner can easily climb over objects (1) with a height of up to 15mm (e.g. door sills, carpets/ rugs).

The climbing ability of the robot vacuum cleaner can be influenced by the shape of the object, the type of floor covering and other local conditions.



# 11 Wi-Fi and app control using smart devices\*

This feature is not available in all countries.

## 11.1 Technical requirements

To control the robot vacuum cleaner using the app, you will require the following:

### Wi-Fi internet connection

- The robot vacuum cleaner supports the communication protocols of IEEE802.11 b/g/n in the 2.4 GHz Wi-Fi frequency band only. The supported encryption standards are WPA3 and WPA2-PSK. If you are not sure of the standards of your Wi-Fi and router, contact your internet provider or router manufacturer.
- If you have activated a MAC address block in your router and wish to enable the robot vacuum cleaner, you can find the MAC address ('Robot ID') on the type plate on the underside of the robot vacuum cleaner.
- Mobile routers may lead to connection problems with the robot vacuum cleaner in isolated cases. If in doubt, avoid the use of mobile routers.

### Smart devices

The MyKobold app is compatible with most standard smartphones and tablets with iOS or Android operating systems. For more detailed information on currently supported devices, see the MyKobold app page in the Google Play Store or the Apple App Store.

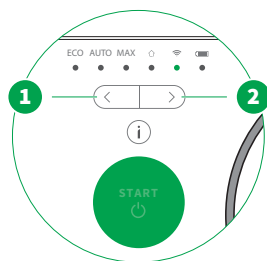
### MyKobold app

For instructions on installing and using the app, see [Installing and pairing the MyKobold app](#) [▶ 33].

### E-mail address

To ensure that only you can control your device via the app, you need to create an account in the MyKobold app using a valid e-mail address prior to use.

## 11.2 Establishing a Wi-Fi Connection



1. Connect the charging cable on the charging station. [▶ 24]
2. Position the robot vacuum cleaner on the charging station and make sure that the robot is switched on.
3. Activate the wireless interfaces (Wi-Fi, etc.) on your mobile device.
4. To establish a Wi-Fi connection, follow the instructions in the [MyKobold app](#) [▶ 33].

<i>Wi-Fi</i> LED (9)	Status
Solid white light	Wi-Fi on / not yet connected to home network
Solid green light	Wi-Fi on / connected to home network
Pulsating green	Looking for a connection
Flashing yellow	Connection problems

## 11.3 Removing the robot vacuum cleaner from your home network

1. To remove the robot from your home network, press the left or right selection key until the *Wi-Fi* LED flashes white.
2. Hold down the information button for at least 10 seconds.  
⇒ *The Wi-Fi settings are now reset.*

**Tip** To reactivate, [connect your robot vacuum cleaner to your home network again](#) [▶ 40].

## 11.4 Controlling the robot vacuum cleaner with Amazon Alexa or Google Assistant

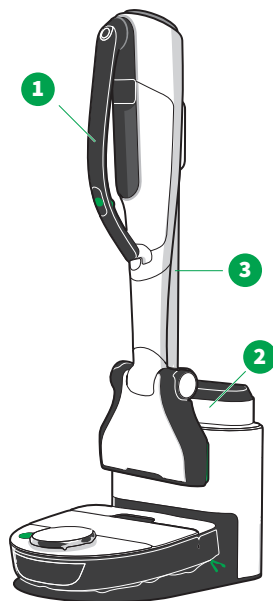
**Note** This feature is not available in all countries.

You can control the robot vacuum cleaner using voice commands with Amazon Alexa or Google Assistant.

For more information on setting up Amazon Alexa, visit [www.amazon.de](http://www.amazon.de) and search for Kobold robot skills. Here you will find all the instructions required for activating the MyKobold app for your Kobold robot vacuum cleaner.

To set up Google Assistant, you will need the Google Assistant app (Android/iOS) on your mobile device. You should then search for Kobold. The app will take you through the set-up process step by step.

## 12 Pairing the emptying & charging station with the dual battery charger



You can pair the Kobold PC7 dual battery charger with the emptying & charging station. This system allows you to additionally charge and store a Kobold VK7 battery in the Kobold PC7 dual battery charger (2) and the Kobold VK7 cordless handheld vacuum cleaner (1) on the emptying & charging station.

For this, you need:

- a Kobold PC7 dual battery charger (2) and
- a Kobold ST7 mount for the RB7 station (3) (optional).

1. Always refer to the instruction manuals for other Kobold devices.
2. Please pay particular attention to the safety information.



For step-by-step instructions, please refer to the installation guide supplied with the Kobold PC7 dual battery charger.

## 13 Transportation

### WARNING



#### Fire hazard!

If the device or battery are accidentally triggered or activated when in transit, this could cause a build-up of heat, which could lead to a fire.

- Follow the instructions in the manual to ensure safe transportation.

The device contains lithium-ion batteries, which are subject to dangerous goods regulations. You can transport the batteries by road (e.g. in your vehicle) without having to meet further requirements. Information on the number of cells and energy of the cells or battery can be found on the battery's data plate.

The device is delivered in transport mode and is therefore already secured against activation. This means that it can be safely shipped in the original packaging without the removal of the battery. Nevertheless, please observe points 1, 5 and 6. If you have started operating the device, transport mode is deactivated.

If the batteries are shipped by a third party (e.g. air freight or courier), you must comply with special requirements with regard to packaging and labelling.

1. Only ship batteries if the battery housing is undamaged. If you are in any doubt as to whether the battery is undamaged, do not ship the battery. If in doubt, consult a dangerous goods expert.
2. If shipping by air freight, the battery must have a charge of 30% or less.
3. Remove the battery by opening the cover on the dust container and unscrewing the 3 screws. [Remove the battery \[▶ 50\]](#) and screw the 3 screws back in.
4. Cover exposed contacts with insulating tape and pack the battery separately from the device in such a way that it cannot move inside the packaging. To obtain suitable original packaging, please contact customer service.
5. Always check with your shipping provider how to pack and label the package. This will depend on whether you are shipping the battery on its own or with the device, and whether the package is to be transported by air.
6. Ensure that you also comply with any additional national and international regulations.

## 14 Maintenance

### CAUTION



#### **Risk of injury from moving parts!**

You could injure yourself on moving parts.

- Stay clear of moving parts.
- Never reach into the moving parts.
- Finish the cleaning cycle and lay the device upside down on a solid, level surface before you start to carry out maintenance on the brushes.

### NOTICE



#### **Risk of damage due to incorrect cleaning!**

The device could get damaged if not cleaned correctly.

- Never clean the device with water, liquid cleaners or a wet cleaning cloth.
- Never wet-clean the roller brush. Use a dry or slightly damp cloth if necessary. The roller brush is not dishwasher safe or waterproof.
- Do not use abrasive cleaning pads, scouring agents or aggressive liquids such as benzene or acetone to clean the device.
- Do not use disinfectant to clean the device.

### NOTICE



#### **Risk of damage from improper use!**

If you use the robot vacuum cleaner without a filter, it could damage the motor and shorten the service life of the device.

- Never use the device without a filter.

### 14.1 Spare parts and consumables

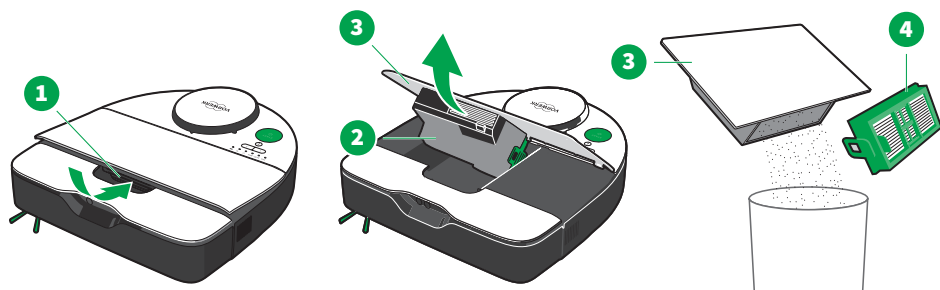
We recommend you take advantage of our reorder options for original care products and original consumables. For more information on the reorder options, see [Service](#) [▶ 63].

### 14.2 Maintenance of your robot vacuum cleaner

#### 14.2.1 Regular cleaning of the robot vacuum cleaner

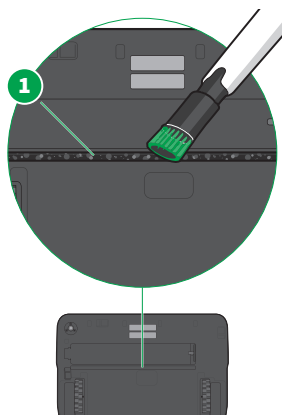
Clean the robot vacuum cleaner with a soft, clean cloth.

### 14.2.2 Emptying the dust container manually



1. Open the dust container by reaching into the recessed grip and pressing the release button with your hand (1).
2. Take the dust container (2) out of the robot vacuum cleaner by extracting it together with the cover (3).
3. Remove the filter (4) and empty the dust container into a bin. Alternatively, you can clean out the filter with a conventional vacuum cleaner.
4. Insert the **dust container (2) with the filter into the robot vacuum cleaner** ▶ 48].
5. Press down on the cover (3) and ensure that it is properly closed.

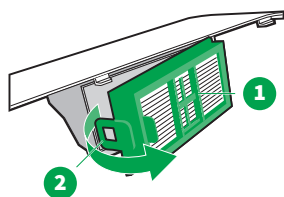
### 14.2.3 Cleaning the rear suction channel



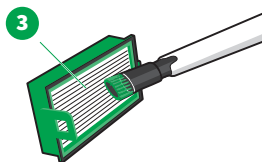
1. **Remove the side brush and brush cover** ▶ 48].
2. Vacuum out the rear suction channel (1) with a vacuum cleaner.
3. Put the **brush cover and side brush** ▶ 48] back into place.

### 14.2.4 Cleaning the filter

Clean the filter at regular intervals.



1. Remove the filter (1) by pulling it out of the dust compartment by the green tab (2) on the filter frame.



2. Vacuum the filter on both sides with a conventional vacuum cleaner (3).

### 14.2.5 Replacing the filter

1. Regularly carry out visual inspections of the filter. Replace the filter if it is distorted or damaged.
2. Replace the filter if cleaning quality declines, and at least once a year.
3. Dispose of used filter bags in household waste.

## 14.2.6 Removing and replacing fragrance chips

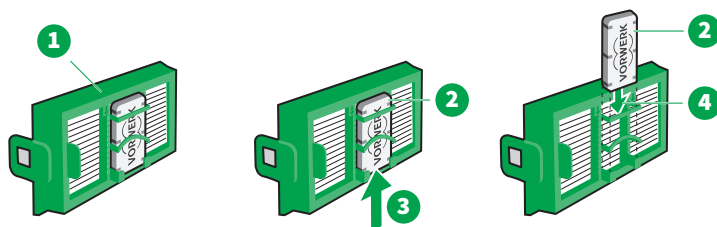
### WARNING



#### Risk of choking!

Small parts may be accidentally swallowed and cause choking.

- Keep small parts such as fragrance chips out of the reach of children.



1. Remove the filter [▶ 45] (1).
2. Remove the old fragrance chip (2) by sliding it out of the fragrance-chip holder from underneath (3).
3. Slide the new fragrance chip (2) into the fragrance-chip holder from above (4) with the Vorwerk logo facing forwards.
4. Put the filter back in [▶ 48].

## 14.2.7 Removing, cleaning and inserting the motor protection filter

### NOTICE

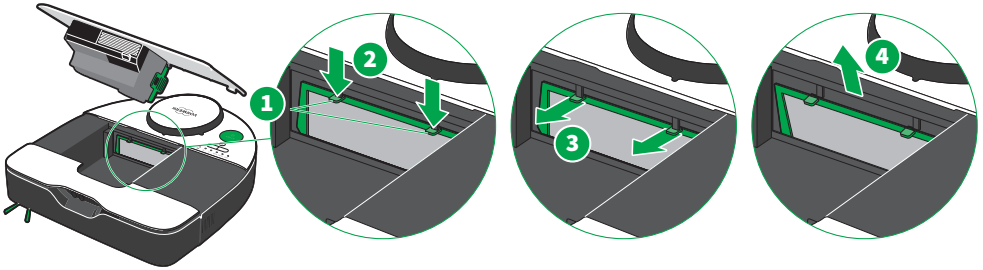


#### Risk of damage from improper use!

A motor protection filter that has not dried properly can cause damage.

- If the motor protection filter is damp, let it dry out in a warm place for 24 hours before putting it back into the device.

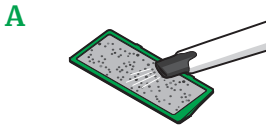
## Removing the motor protection filter



1. Hold the motor protection filter by the catches (1) and press it downwards (2).
2. Pull the motor protection filter forwards (3).
3. With the motor protection filter tilted forwards, pull it upwards to remove it (4).

## Cleaning the motor protection filter

1. Clean the motor protection filter on both sides.

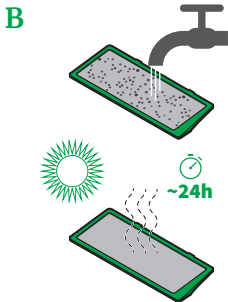


2. **Option A**

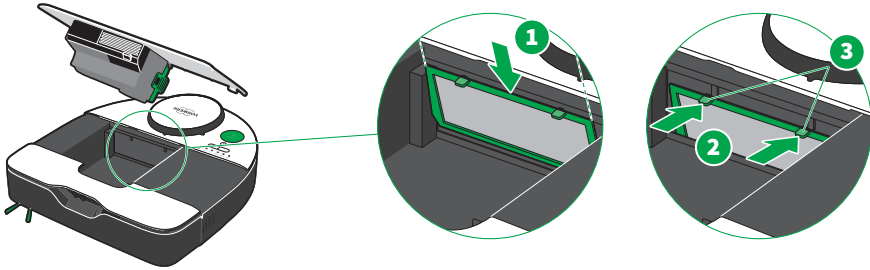
Clean the motor protection filter by vacuuming it on both sides with a vacuum cleaner.

**Option B**

Alternatively, rinse the motor protection filter under cold running water. Allow the motor protection filter to dry out completely in a warm place for 24 hours before putting it back into the robot vacuum cleaner.

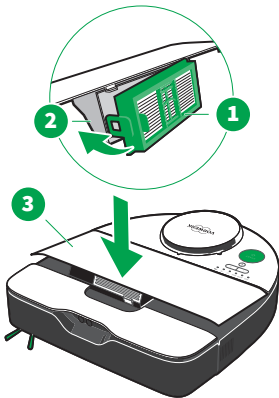


## Inserting the motor protection filter



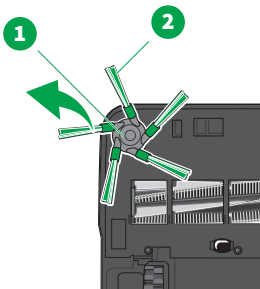
1. If the motor protection filter is damaged or extremely dirty, insert a new one.
2. To reinstall the motor protection filter, insert it into the holder from above (1).
3. Hold the motor protection filter by the catches (3) and press it backwards (2).

### 14.2.8 Reinstalling the dust container and filter



1. Put the filter (1) into the dust container (2). Hook the right-hand side of the filter into the dust container. Then, position the left-hand side of the filter with the green tab so that it clicks into place on the dust container.
2. Insert the dust container (2) with the filter into the robot vacuum cleaner.
3. Press down on the cover (3) until it is fully closed.

### 14.2.9 Cleaning the side brush

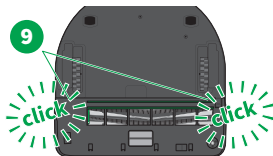
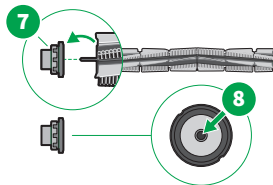
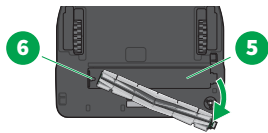
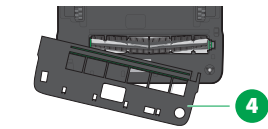
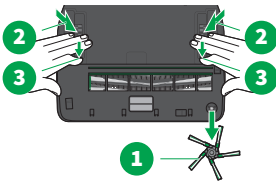


1. Place the robot vacuum cleaner upside down on a soft surface.
2. Holding the green bristles (2) with both hands, pull the side brush (1) up and away from the drive axle.
3. Remove any dust and dirt from the side brush.
4. Remove any lint, hair or other dirt from the drive axle.
5. **You may need to remove the brush cover for this [▶ 49].**
6. Ensure that the brush cover is fitted before you reinstall the side brush.

7. Press the side brush back into position on the drive axle to install it.

### 14.2.10 Cleaning the roller brush

Clean the roller brush if hair or threads have become wrapped around it.



1. Place the robot vacuum cleaner upside down on a soft surface.
2. Remove the side brush [▶ 48] (1).
3. Push the wheels (2) down and push the latches (3) on each side of the brush cover forward at the same time with both hands to unlock the brush cover.
4. Remove the brush cover (4). Vacuum out the brush cover if it is dirty.
5. First lift the right-hand side of the roller brush out of the brush channel (5) and then pull the left-hand side away from the axle (6) to remove the roller brush.
6. Vacuum out the brush channel if it is dirty.
7. Remove the yellow protective cap with the metallic attachment (7) on the left-hand tip of the roller brush. Make sure that the bearing inside (8) does not come loose.
8. Remove lint, hair and dirt from the roller brush.
9. To reinstall the roller brush and the brush cover, follow the steps to remove the roller brush in the reverse order.
10. Make sure that the latch clicks into place when putting the brush cover back on (9).

### 14.2.11 Cleaning the sensors

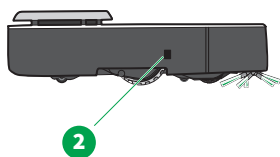
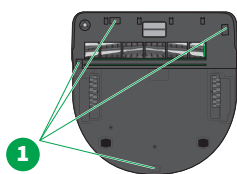
## WARNING



### Risk of serious injury!

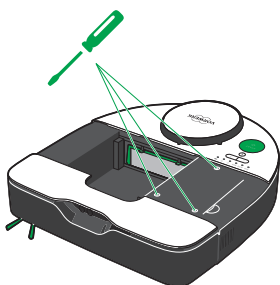
If the floor sensors are covered or dirty, the device may fall down stairs or landings.

- Remove easily moveable rugs or runners as well as lightweight, loose objects. Such objects may be pushed along in front of the robot vacuum cleaner, thereby obstructing its floor sensors.
- Clean the floor sensors regularly (ideally every time the dust container is emptied).



1. Clean the floor sensors (1) on the underside of the robot vacuum cleaner with a cotton bud or a soft, clean cloth, but never with pointed or sharp objects.
2. If required, you can also clean the area around the sensors with a vacuum cleaner if very dirty.
3. Clean the wall-following sensor (2) on the right-hand side with a cotton bud or a soft, clean cloth.
4. Clean the sensors (3) on the front of the robot vacuum cleaner with a cotton bud or a soft, clean cloth, but never with pointed or sharp objects.

### 14.2.12 Removing or changing the battery



1. Open the cover on the dust container [▶ 44].
2. Unscrew the 3 screws on the battery.
3. Remove the battery by carefully lifting it out of the battery compartment.
4. Insert the new battery into the battery compartment.
5. Tighten the 3 screws again to secure the battery.
6. Close the robot vacuum cleaner again by pressing the cover on the dust container down, making sure that it is closed properly.

Only change the battery if the battery performance has diminished or if the battery is damaged.

## 14.3 Maintenance of the emptying & charging station

### 14.3.1 Opening and closing the filter cover

#### Opening the filter cover

1. Lift up the release lever (1) to remove the filter cover (2).
2. Fold down the filter cover fully.  
From this position, you can remove the filter cover from the emptying & charging station.

#### Putting the filter cover on

1. Insert the small catches (3) on the filter cover (which is pivoted open) horizontally into the openings at the base of the device.
2. Close the filter cover (2) by pressing gently and close the release lever on the filter cover.
3. When putting the filter cover back on, make sure that the premium filter bag does not get caught between the cover and the seal.
4. Do not use force if it is difficult to close the filter cover. Make sure that the premium filter bag is correctly inserted.



## 14.3.2 Inserting and changing the premium filter bag

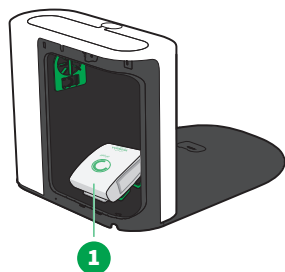
### CAUTION



#### Loss of suitability for allergy sufferers and risk of damage from improper use!

Unsuitable or damaged filter material will not retain fine, allergenic particles.

- Only use the original Kobold products that are intended to be used with this device.
- Do not reuse spent Kobold premium filter bags.
- Only use the device with an original Kobold premium filter bag installed.



1. **Open the filter cover** [▶ 51].
2. Remove the old premium filter bag by removing it from its holder, and dispose of it in household waste.
3. Insert a new, folded premium filter bag (1) into the filter compartment.
4. Do not cut through the sleeve around the premium filter bag, as this will be done by the filter cover when you close it.
5. Make sure that the premium filter bag does not get caught between the filter cover and the seal.
6. **Close the filter cover** [▶ 51].

**Note** Some resistance will be felt when the cover latch engages with the sleeve and cuts through it. After that, no resistance will be felt as the sleeve has already been detached.

### 14.3.3 Cleaning the emptying & charging station

#### WARNING



##### **Risk of electric shock!**

**If water gets into the electrical components, you could get an electric shock.**

- Never clean the mains plug on the charging station with water, liquid cleaners or a wet cleaning cloth.
- The emptying & charging station is connected to the power supply. Therefore, only clean the filter compartment and the sealing surfaces around the filter bag and robot vacuum cleaner with a slightly damp (not soaking wet!) cloth, if necessary.
- Never clean the remaining areas of the emptying & charging station, including the power cord, with water, liquid cleaners or a wet cleaning cloth.
- Do not use the charger or charging unit in damp environments.
- Never immerse the charger or charging unit in water or other liquids.
- Never pour water over the charger or charging unit.
- Do not hold the charger or charging unit under running water.

#### WARNING



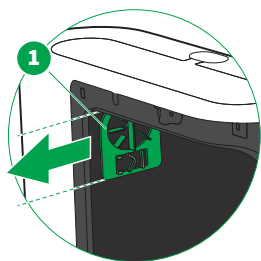
##### **Risk of electric shock!**

**Carrying out cleaning when the charger is still plugged in could cause an electric shock.**

- Disconnect the charger and/or connection cable for the charger from the power socket before cleaning.

1. [Open the filter cover \[▶ 51\]](#).
2. [Remove the premium filter bag \[▶ 52\]](#).
3. Lightly wipe the sealing surface around the premium filter bag and filter compartment with a damp cloth.
4. Carefully wipe the seals around the suction opening on the robot vacuum cleaner.
5. If coarse particles (e.g. small stones) have collected in the suction channel on the emptying & charging station, vacuum the suction channel using a crevice nozzle.
6. Make sure that the emptying & charging station is completely dry before you close it again.
7. [Put the premium filter bag back in \[▶ 52\]](#).
8. [Close the filter cover \[▶ 51\]](#).

### 14.3.4 Removing, cleaning and inserting the motor protection filter



The motor protection filter (1) shields your device from contaminants. To ensure the long service life of the charging station, it is important to carry out visual checks and maintenance on the motor protection filter at regular intervals. The motor protection filter can be cleaned as many times as necessary. It must only be replaced if the premium filter bag has been damaged or if the motor protection filter is extremely dirty or gummed up.

The motor protection filter is held in two places in the filter compartment on the device. It is easy to remove, clean and re-insert the motor protection filter when the premium filter bag is not installed.

1. **Open the filter cover** [▶ 51].
2. Remove the premium filter bag.
3. Take hold of the motor protection filter (1) in the middle and pull it out.

4. Clean the motor protection filter.

#### **Option A**

Clean the motor protection filter by vacuuming it on both sides with a vacuum cleaner.

#### **Option B**

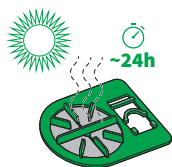
Alternatively, rinse the motor protection filter under cold running water. Allow the motor protection filter to dry out completely in a warm place for 24 hours before putting it back into the emptying & charging station.

5. If the motor protection filter (1) is damaged or extremely dirty, insert a new one.
6. To re-insert the motor protection filter (1), slide it back in on the guide rails.
7. Put the premium filter bag back in.
8. **Close the filter cover** [▶ 51].

**A**



**B**



### 14.3.5 Removing and replacing the fragrance chip

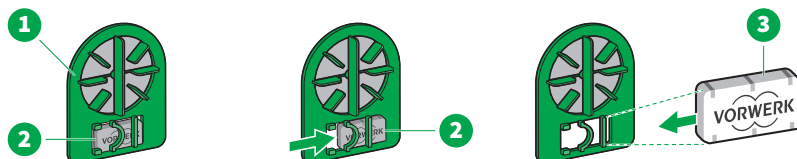
## WARNING



### Risk of choking!

Small parts may be accidentally swallowed and cause choking.

- Keep small parts such as fragrance chips out of the reach of children.



1. [Open the filter cover](#) [▶ 51].
2. [Remove the motor protection filter](#) [▶ 54] (1).
3. Remove the old fragrance chip (2) by sliding it out of the fragrance-chip holder from the side.
4. Slide the new fragrance chip (2) into the holder on the motor protection filter from the side, with the Vorwerk logo facing forwards.
5. [Put the motor protection filter back in](#) [▶ 54].
6. [Close the filter cover](#) [▶ 51].

## 15 Software update

The software for the robot vacuum cleaner undergoes further development and optimisation when required. To ensure that you benefit from these improvements, the latest versions of the software are available via our app.

Subscribers to our newsletter will receive regular updates and information.

It is also possible to manually install software updates. This requires a premium-quality USB-C cable. The latest software version is available at [www.support.vorwerk.com](http://www.support.vorwerk.com).

You can of course also have new versions of the software installed at our Service Centers. For locations and opening hours, please visit our website or call our [customer hotline](#) [▶ 63].

# 16 Troubleshooting

## WARNING



### Risk of fire or electric shock!

If incorrect repairs are performed on the device or corresponding charger/charging unit, this may cause a fire or electric shock.

- Never attempt to repair the device yourself.
- Repairs to electrical appliances may only be carried out by a Vorwerk customer service centre, a workshop authorised by Vorwerk or a person with similar qualifications in order to avoid hazards.
- Defective parts may only be replaced by original replacement parts in order to avoid hazards.
- In the event of damage to your device, contact Vorwerk customer service.
- Only operate the charger/charging unit on a connection that has been properly installed by a qualified electrician.
- Do not attempt to open the charger and repair it yourself. The charger has live parts inside and is not a serviceable component.

If your device is not working properly, it could be due to one of the following reasons:

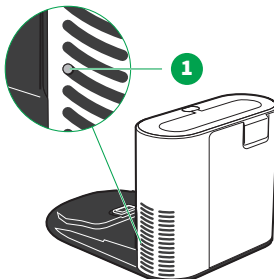
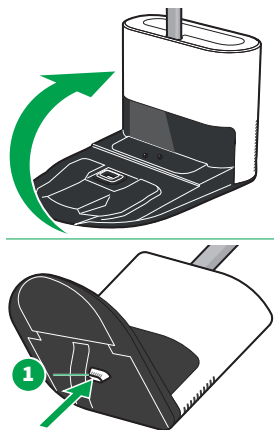
## 16.1 Faults

Fault	Possible cause and rectification
The cleaning performance of the robot vacuum cleaner has decreased.	The dust container is probably full. <ul style="list-style-type: none"><li>– Empty the dust container and clean or replace the filter.</li></ul> The brushes are dirty. <ul style="list-style-type: none"><li>– Clean the <a href="#">side brush</a> [▶ 48] and <a href="#">roller brush</a> [▶ 49].</li></ul>
The robot vacuum cleaner is not responding.	The battery may be empty. <ul style="list-style-type: none"><li>– Charge the robot vacuum cleaner on the <a href="#">charging station</a> [▶ 29].</li><li>– Make sure that the plug is properly connected to the jack on the charging station.</li><li>– Also make sure that the mains plug is properly connected to the power socket.</li></ul> The robot vacuum cleaner may not be switched on. <ul style="list-style-type: none"><li>– Check whether the robot vacuum cleaner is switched on. If not, press the START button.</li></ul> The robot vacuum cleaner's battery will discharge if it is docked on a charging station that is not connected.

Fault	Possible cause and rectification
The robot vacuum cleaner is not charging.	<p>The charging station and/or robot vacuum cleaner may not be properly connected to the power supply.</p> <ul style="list-style-type: none"> <li>- Make sure that the plug is properly connected to the jack on the charging station.</li> <li>- Make sure that the mains plug is properly connected to the power socket.</li> <li>- Make sure that the robot vacuum cleaner is correctly positioned on the charging station. If the robot vacuum cleaner is correctly positioned, the LEDs will light up in succession.</li> </ul> <p>If you do not charge the robot vacuum cleaner on the charging station and have not switched it off using the <a href="#">shutdown robot [▶ 36]</a> option, the battery will self-discharge after a few days.</p> <p>The charging contacts on the charging station may be dirty or jammed.</p> <ul style="list-style-type: none"> <li>- Make sure that the charging contacts are not jammed.</li> <li>- If the charging contacts are dirty, clean them.</li> </ul>
The robot vacuum cleaner suddenly stops cleaning.	<p>The sensors may be covered or dirty.</p> <ul style="list-style-type: none"> <li>- Make sure that the sensors are not covered.</li> <li>- <a href="#">Clean the sensors [▶ 50]</a> with a soft, clean cloth or cotton bud if they are dirty.</li> </ul> <p>In large, empty rooms, navigation may be impaired if there are no furnishings or walls within a radius of 2 – 3 metres.</p> <ul style="list-style-type: none"> <li>- Place objects or furniture in the room to serve as <a href="#">fixed reference points [▶ 23]</a>.</li> </ul> <p>On thick pile carpets, the wheels of the robot vacuum cleaner may spin, which can lead to navigation errors.</p> <ul style="list-style-type: none"> <li>- Section off the carpet using no-go zones in the MyKobold app.</li> </ul> <p>If the sensors are dirty, the robot vacuum cleaner may interpret dark or dense carpets as a drop-off. Glass floors are generally interpreted as a drop-off.</p> <ul style="list-style-type: none"> <li>- Clean the floor sensors regularly.</li> </ul>
The robot vacuum cleaner is not working as expected.	<p>You may have customised your robot vacuum cleaner using the app (e.g. no-go zones).</p> <ul style="list-style-type: none"> <li>- Check the app for the settings you have selected.</li> </ul>
The robot vacuum cleaner is not returning to the charging station after cleaning.	<p>The infrared window on the charging station may be covered.</p> <ul style="list-style-type: none"> <li>- Make sure that you have removed the protective film from the infrared window on the charging station.</li> </ul> <p>You may have started the cleaning process in normal cleaning mode from a location other than the charging station.</p> <p>If you start the robot vacuum cleaner at a different location in the room, it returns there after cleaning.</p>

Fault	Possible cause and rectification
	<ul style="list-style-type: none"> <li>- Start the robot vacuum cleaner from the charging station if you would like it to stop cleaning there.</li> </ul> <p>Cleaning may have been interrupted, and the robot vacuum cleaner may have been switched back on in a different place in the room.</p> <p>The sensors on the charging station or several sensors on the robot vacuum cleaner may be <a href="#">covered or dirty</a> [▶ 43].</p> <ul style="list-style-type: none"> <li>- Remove the objects covering the sensors on the robot vacuum cleaner and clean the sensors.</li> </ul> <p>The charging station may be located behind a wall or other obstacle that is blocking the signal.</p> <ul style="list-style-type: none"> <li>- Set up the charging station in a different location.</li> <li>- Make sure that there are no obstacles within 0.3 metres on either side of the charging station.</li> </ul> <p>You may have cleaned an area using SPOT cleaning mode. Once the robot vacuum cleaner has cleaned the area, it automatically returns to the starting position and stops there. In normal cleaning mode, the robot vacuum cleaner automatically returns to the charging station.</p> <p><b>Note:</b> SPOT cleaning is only available using the MyKobold app.</p> <p>The charging station may not be in the best location.</p> <p>Test whether the charging station is in an optimum location:</p> <ul style="list-style-type: none"> <li>- Start a SPOT clean from the charging station. If the robot vacuum cleaner cannot find the charging station afterwards, it is not ideally positioned. Please try this again using a different location.</li> </ul>
The emptying & charging station is blocked.	<p>The robot vacuum cleaner may not have been manually cleaned at regular intervals.</p> <ul style="list-style-type: none"> <li>- <a href="#">Clean the robot vacuum cleaner</a> [▶ 43].</li> <li>- <a href="#">Change the premium filter bag</a> [▶ 52].</li> <li>- <a href="#">Clean the emptying &amp; charging station</a> [▶ 53].</li> </ul>
The roller brush is jammed.	<p>The robot vacuum cleaner may be on a long-pile carpet.</p> <ul style="list-style-type: none"> <li>- Start the robot vacuum cleaner on a hard floor.</li> <li>- Section off the carpet using no-go zones in the MyKobold app.</li> </ul> <p>Hairs or threads may be obstructing the roller brush.</p> <ul style="list-style-type: none"> <li>- <a href="#">Clean the roller brush</a> [▶ 49].</li> </ul> <p>Rug fringes may have got caught.</p> <ul style="list-style-type: none"> <li>- Release the fringes from the brush.</li> <li>- Section off the carpet using no-go zones in the MyKobold app.</li> </ul> <p>If the fault cannot be rectified, please contact <a href="#">Vorwerk customer service</a> [▶ 63].</p>

## 16.2 Emptying & charging station

Fault	Possible causes and rectification
<p>The white LED on the outlet grille of the emptying &amp; charging station is not lighting up after plugging in the power cord.</p>	<p>The emptying &amp; charging station may not be properly connected to the power supply.</p> <ul style="list-style-type: none"><li>- Make sure that the plug is properly connected to the jack on the emptying &amp; charging station.</li><li>- Make sure that the mains plug is properly connected to the power socket.</li></ul>
<p>The LED (1) on the outlet grille is lit red.</p> 	<p>There may be a fault.</p> <ul style="list-style-type: none"><li>- Disconnect the mains plug on the emptying &amp; charging station from the power socket, and wait for about 60 seconds before plugging it back in again. If the error persists, please contact <a href="#">customer service</a> [▶ 63].</li></ul>
<p>The ST7 mount cannot be removed from the emptying &amp; charging station.</p> 	<ul style="list-style-type: none"><li>- Carefully lay the emptying &amp; charging station on its back.</li><li>- Press the button (1) on the underside of the emptying &amp; charging station and remove the ST7 mount.</li></ul>
<p>The information button on the robot vacuum cleaner is lit yellow.</p>	<p>The premium filter bag in the emptying &amp; charging station may be full. You will be informed of this via the robot's voice response.</p> <ul style="list-style-type: none"><li>- <a href="#">Change</a> [▶ 52] the premium filter bag in the emptying &amp; charging station.</li></ul>

---

<b>Fault</b>	<b>Possible causes and rectification</b>
The information button on the robot vacuum cleaner is lit red.	<p data-bbox="352 108 1062 172">This may be due to one of the following problems. The robot's voice response will inform you what the problem is.</p> <p data-bbox="352 172 1062 236">The premium filter bag in the emptying &amp; charging station has reached a critical fill level.</p> <ul data-bbox="352 236 1062 316" style="list-style-type: none"><li data-bbox="352 236 1062 316">- <a href="#">Change [▶ 52]</a> the premium filter bag in the emptying &amp; charging station.</li></ul> <p data-bbox="352 316 1062 379">The filter cover on the emptying &amp; charging station is not closed properly.</p> <ul data-bbox="352 379 1062 427" style="list-style-type: none"><li data-bbox="352 379 1062 427">- <a href="#">Ensure that the filter cover closes properly [▶ 51]</a>.</li></ul> <p data-bbox="352 427 1062 459">The robot vacuum cleaner is not charging.</p> <p data-bbox="352 459 1062 518"><a href="#">Check whether the robot vacuum cleaner is correctly docked on the charging station [▶ 30]</a></p>

---

## 17 Disposal and environmental protection

### 17.1 Disposal of the device



This symbol means that electrical and electronic appliances may not be disposed of in household waste. You can return your old electrical appliances to a municipal collection point free of charge.

### 17.2 Disposal of batteries

The lithium-ion battery contains substances that can be harmful to the environment. Before scrapping the device, the battery must be removed. Only dispose of batteries that are completely empty. The contacts on the battery must not come into contact with metal under any circumstances and should be covered with insulating tape prior to disposal.



The crossed-out bin symbol depicted on a battery or on a rechargeable battery means that the battery/rechargeable battery must not be put into household waste.

The separate collection of old batteries and rechargeable batteries is intended to enable correct recycling and to prevent negative effects on health and the environment.

Batteries and rechargeable batteries must not be disposed of in household waste. You are legally required to return all used batteries and rechargeable batteries.

### 17.3 Disposal of premium filter bags and robot vacuum cleaner filters

Dispose of premium filter bags and robot vacuum cleaner filters in household waste.

### 17.4 Disposal of the packaging

The packaging is an important part of the product. It protects our devices against damage in transit and reduces the risk of a fault. For that reason, we cannot avoid using packaging. The original packaging provides the best protection against damage in transit if you need to send your device to our customer service department.

If you want to dispose of the packaging, please use regional collection points such as waste-paper and recycling containers.

## 18 Warranty

Any warranty services can be found in the order note or purchase contract.

## 19 Service

For more information, please speak to our UK & Ireland Customer Care team, either by calling +44 330 6600 834 (Monday to Friday 09:00 – 17:00) or sending an email to [info@vorwerk.co.uk](mailto:info@vorwerk.co.uk).

## 20 Technical Data

### 20.1 Robot vacuum cleaner

#### Kobold VR7 robot vacuum cleaner

Safety symbols



Housing	high-quality, recyclable plastic
Fan motor	maintenance-free DC motor
Volume flow	11 l/s
Consumption	total approx. 70 W (depending on floor covering) / approx. 54 W (ECO mode)
Weight	approx. 5 kg
Sound power level	72 dB (A) re 1 pW (on carpet)
Battery	Lithium-ion 14.4 V – 14.8 V, nominal Type designation: BATTERY PACK 202101...
Battery charge times	after max. 1 hour: cleaning is possible again. after 3.5 – 4 hours: full charging of completely empty battery. Times may vary depending on the pretreatment of the battery and the ambient conditions.
Battery charging cycles / battery life	approx. 70% capacity after approx. 800 full cycles
IEC/EN modes	Accessible via the MyKobold app by clicking on the robot icon on the robot's subpage five times.
Information on connectivity	2.4 GHz      2.412 GHz – 2.472 GHz      < 20 dBm 2.4 GHz      2.402 GHz – 2.480 GHz      < 10 dBm
VR7 software licence	Connect switched-on VR7 to PC via USB-C. Licence can be retrieved under the VR7's device name 'Vorwerk Robot' in the subfolder 'SW Update'  <a href="https://support.vorwerk.com/hc/en-us/articles/8137040801436">https://support.vorwerk.com/hc/en-us/articles/8137040801436</a>

#### Laser radiation according to IEC 60825-1:2014

Wavelength	783.1 nm
Pulse duration	82 µs
Average power	4.54 µW

#### Operation


Ambient temperature	10 °C ~ 35 °C
---------------------	---------------

#### Storage

Ambient temperature	5 °C ~ 35 °C
---------------------	--------------


## 20.2 Solo charging station

### Kobold CB7 solo charging station

Mains charger type	S030BB...
Safety symbols	
Input voltage	100-240 V AC
Input AC frequency	50/60 Hz (automatic adjustment)
Output voltage	19.5 V DC
Output current	1.5 A
Output power	29.95 W
Average active efficiency	> 86.9 %
Efficiency at low load (10 %)	> 83 %
Power consumption at zero load	< 100 mW

## 20.3 Emptying & charging station

### Kobold RB7 emptying & charging station

Safety symbols	
Housing	High-quality, recyclable plastic
Motor	maintenance-free SR motor
Fan	single-stage fan
Input voltage	220-240 V AC
Input AC frequency	50/60 Hz (automatic adjustment)
Output voltage	19.5 V DC
Output current	1.5 A
Output power	< 30 W
Volume flow	≥ 20 l/s
Power consumption at zero load	< 0.5 W
Power consumption on standby	< 2 W
Weight	approx. 4.5 kg
Sound power level	80 dB(A) re 1 pW
Type	RB7

## 20.4 Manufacturer and Importer

### Manufacturer

Vorwerk Elektrowerke GmbH & Co. KG  
Mühlenweg 17-37  
42270 Wuppertal  
Germany

### Importer

Vorwerk UK Limited  
Ashurst Manor  
Church Lane  
Ascot  
SL5 7DD

## 21 Declaration of Conformity

Vorwerk Elektrowerke GmbH & Co. KG hereby declares that the radio equipment type Kobold VR7 robot vacuum cleaner is in compliance with the Directive 2014/53/EU. The full text of the EU declaration of conformity is available on the following websites:  
<https://www.vorwerk-group.com/de/home/meta/eu-konformitaetserklaerung>  
<https://www.vorwerk-group.com/en/home/meta/ec-declaration-of-conformity>

